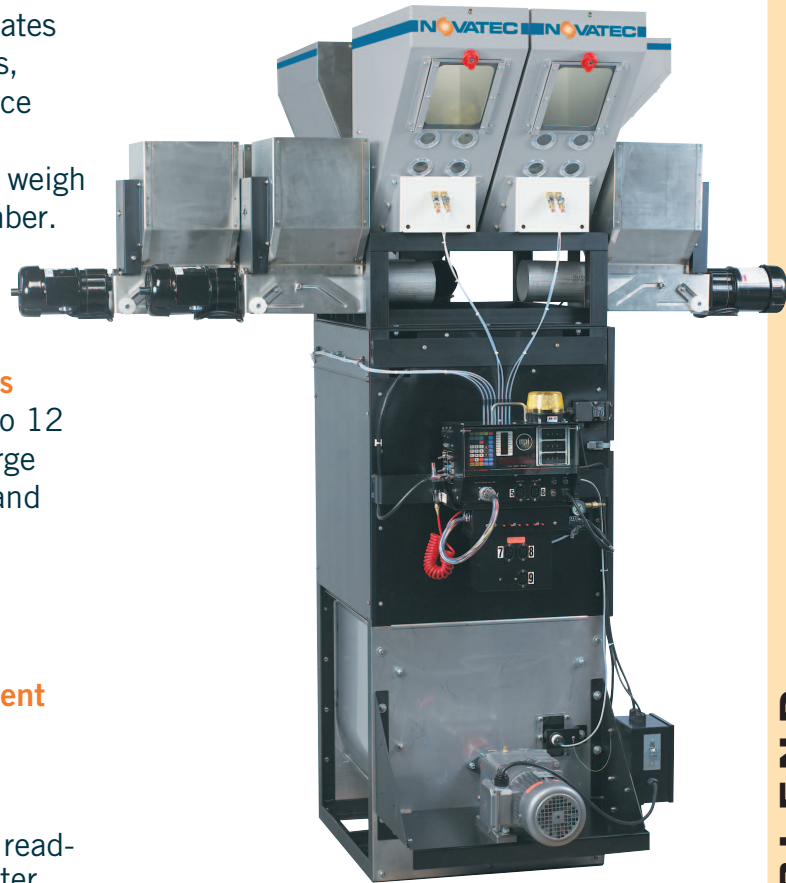


Blends up to 12 ingredients including pellets, additives and bulk powders such as wood flour

A single MaxiBatch™ blender utilizes a variety of proprietary, interchangeable dispense methods to enable accurate blending of up to 12 ingredients as either a major or minor component. It accommodates twelve removable hoppers for as many ingredients, each hopper incorporates its own dispensing device designed for precise metering in large quantities. The ingredients are dispensed sequentially into a weigh chamber; the batch then falls into a mixing chamber.



- **Large Throughputs for High Capacity Processes**
Up to 8,000 lb./hr. (3600 kg/hr). Blends up to 12 ingredients. Precise and efficient dosing of large quantities of bulk powders such as additives and wood flour.
- **Easily Add or Remove Dispense Devices**
No-tools exchange of one dispense device for another.
- **Bulk Powder Dispensing in a Sealed Environment**
Contains dust and reduces plant clean-up
- **New 12-12 Controller with Twelve Component Software**
Clear messages in 9 languages replace coded read-out. User-friendly interface: 2-line, 40-character vacuum fluorescent display.
- **USB Port and Ethernet**
A USB port is included for software updates, printers and documentation-Ethernet capability now standard.
- **Optional Touch Screen Controller**
This optional control includes an intuitive, user-friendly touch screen and Ethernet connectivity plus unique onboard wireless capability.

Interchangeable hoppers and dispensing devices provide unlimited flexibility

Smaller footprint, lower cost and more flexibility than previous methods for high capacity blending

Blends up to 12 components
Throughput up to 8000 lb/hr (3600 kg/hr)

Modular dispensing devices affords blend flexibility

Dosing accuracy of 1/10 of 1%

Safety interlock

Unique Maguire controller with direct setting of blend percentages

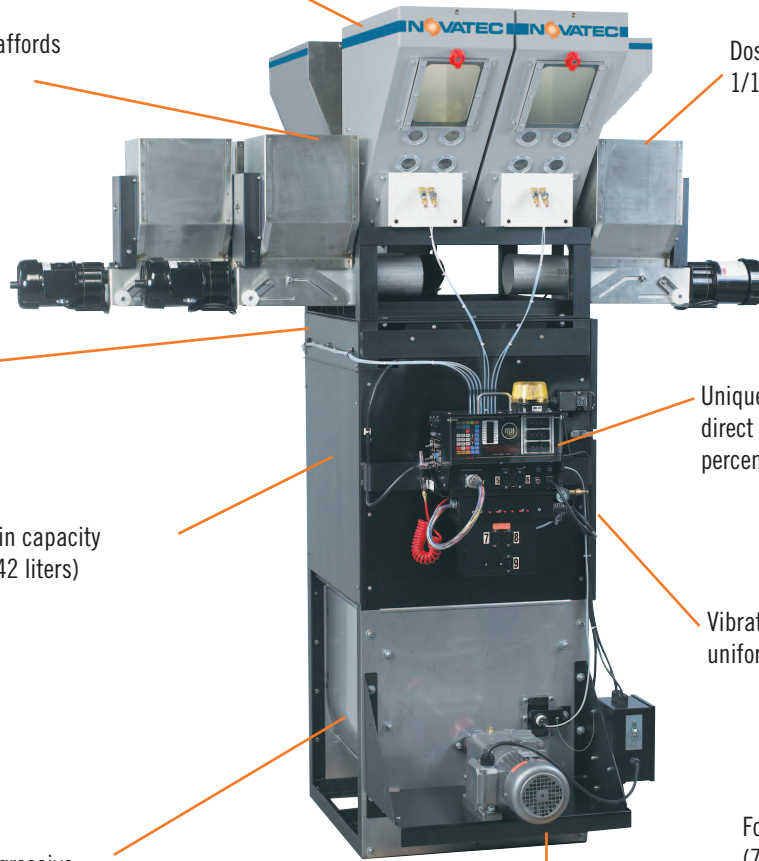
Weigh bin capacity 5 ft³ (142 liters)

Vibration isolation assures uniform blend accuracy

Mix chamber with aggressive, paddle-type mix blade 5.5 ft³ (156 liters)

Footprint: 28" x 26" (710 mm x 660 mm)

3/4 HP (.6 kW) mix motor



MODEL	BATCH SIZE	NUMBER OF MATERIALS / APPLICATION	MAXIMUM THROUGHPUT CAPACITY	AIR SUPPLY	POWER REQUIREMENTS	OVERALL DIMENSIONS L x W x H (approx.)	INSTALLED WEIGHT (approx.)
WSB-3020	65–130 lb. 30–60 kg	2 Materials / High Volume Extrusion	8,000 lb./hr. 3,600 kg/hr	85 psi 6 Bar	230V/3Ph/60Hz or 480V/3Ph/60Hz or 400V/3Ph/50Hz	50 x 50 x 90 in. 1300 x 1300 x 2300 (mm)	Contact Novatec
WSB-3040		4 Materials / High Volume Extrusion	5,950 lb./hr. 2,700 kg/hr			50 x 50 x 90 in. 1300 x 1300 x 2300 (mm)	
WSB-3043		7 Materials / Compounding	4,850 lb./hr. 2,200 kg/hr			60 x 80 x 90 in. 1500 x 2100 x 2300 (mm)	
WSB-3045		9 Materials / Wood Composite	2,200 lb./hr. 1,000 kg/hr			80 x 85 x 90 in. 2000 x 2150 x 2300 (mm)	

Advanced Controls Provide Flexibility and Accountability

12-12 Controller-Standard - Over 40,000 in use around the world

Enter settings for percentage of color, additive or regrind on the thumbwheel switches, and the system does the rest. Clear messages in 9 languages replaces coded readout. User-friendly interface: 2-line, 40-character vacuum fluorescent display. USB port included for software updates, printers and documentation. Ethernet capability now standard.



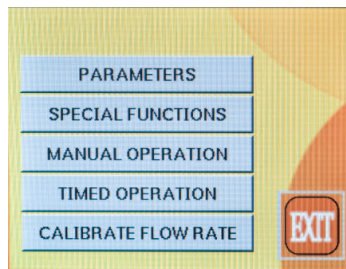
Advanced Color Touch Screen Control Option



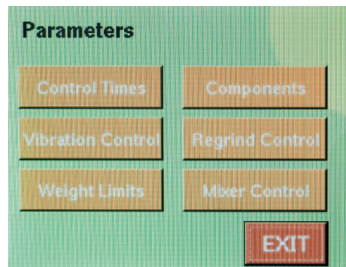
All the features of the standard controller plus the ease of touch screen navigation. This optional control includes an intuitive, user-friendly touch screen and Ethernet connectivity. Unique onboard wireless capability eliminates the cost of installing cable throughout the production area and readily links to other wireless equipped machines.

Component Selection and Type			
MAT 1	MAT 2	MAT 3	MAT 4
REG	NAT	OFF	OFF
MAT 5	MAT 6	MAT 7	MAT 8
ADD	OFF	OFF	OFF
MAT 9	MAT 10	MAT 11	MAT 12
OFF	OFF	OFF	OFF
EXIT			

Component Selection



Blender Set-up



Parameter Selection



2-Level Password Security

Standard features:

Touch screen control

A single control with Ethernet connectivity and intuitive 5.5" color touch screen controls all functions of all Weigh Scale Blenders®

Easy component assignment

Easy assignment of each component type on a single screen

Intuitive display

Intuitive display and tracking of all parameters for up to 12 ingredients

Easy access to parameters

Set Control Times, Vibration Control, Weight Limits, Components, Regrind Control, and Mixer

Recipe storage

Enter recipes as percentages or as ratios - stores up to 99 internal recipes

Record keeping

Material usage, alarms and operation details are easily downloaded to a USB drive or a printer

Automatic calibration

Auto self-check and load cell calibration

Password security

Two-level password security

Software updates

Can be uploaded via USB port

Flexible communications

Ethernet connectivity



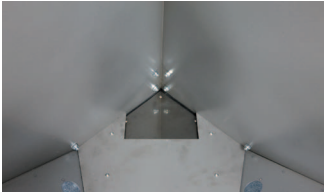
Retrofit Touch Screen Controller

Control Your Productivity Through Advanced Materials Management:

The G2 software package makes possible rapid two-way communication between a PC and the controllers of Maguire® Weigh Scale Blenders on multiple processing machines. This advanced technology enables manufacturers to control the single largest cost factor in plastics processing today — raw materials. See Blender Selection Guide for details.

Options:

A variety of proprietary, interchangeable dispense devices and bin sizes allows the MaxiBatch™ to be customized for your application.



High Flow Corner Valve

- Will dispense pellet or regrind materials only
- Hopper capacity: 4 ft³ (113 liters)
- Flow Rate: 11,000 grams/sec. @ 35 lb/ft³ (56 kg/dm³)
Steel P/N: as6-CR (Right), as6-CL (Left)
Stainless Steel P/N: : as6-CRS (Right), as6-CLS (Left)



Low Flow Vertical Pivot Valve

- Suitable for pellets, regrind and some LGF materials
- Flow rate: 2,000 grams/sec. @ 35 lb/ft³ (56 kg/dm³) - 4" dia.
- Hopper capacity: 2 ft³ (57 liters) 4 ft³ (114 liters)
as6-VR (Right) as6-CVR (Right)
as6-VL (Left) as6-CVL (Left)



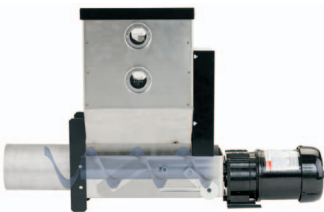
Wood Flour/Powder Feeder - with internal bridge breaker

- Suitable for very low bulk density powders
- Specifically designed for wood flour @ 10-15 ft³ (16 to 24 kg/dm³)
- Hopper capacity: 4 ft³ (113 liters)
- Flow rate: 3 ft³/min. (85 liters/min.) - 4" auger
P/N: AWF-64W



2 inch Pellet Additive Auger Feeder

- Suitable for pelletized additive materials
- Hopper capacity: 2 ft³ (57 liters)
- Flow rate: 10 lb/min. (5 kg/min.)
P/N: AWF-16-3



Small Capacity Powder Feeders

- Suitable for a variety of powdered materials
- Hopper capacity is limited and should be specified for minor ingredients
- Hopper capacity: 2 ft³ (57 liters)
- Flow rates:
4" dia. auger 3 ft³/min. (85 liters/min.) P/N: AWF-64
Long tube:
4" dia. auger P/N: AWF-64L
3" dia. auger P/N: AWF-48L
2" dia. auger P/N: AWF-32L

- **Touch Screen Controller:** 115VAC P/N OPW-CT1, 230VAC P/N OPW-CT2
- **High Temperature Configuration:** (300°F) P/N OPW-30T

Accessories:

- **Vacuum Take-off Stand Assembly:** (Includes single outlet and 3" probe) P/N VTA-30 (11 ft³ bin)
- **Additional Probes:** (Up to 11 may be added) 1.5" P/N avp-24, 2" P/N avp-32, 2.5" P/N acvp-40, 3" P/N avp-48
- **Flow Control Valve:** (6") P/N FCA-6
- **Flow Control Valve - Butterfly Type:** (Heavy frame, 6") P/N FCA-6B