

### NDB Micro Model Dryers employ accepted dual-bed drying technology that guarantees - 40°dew point process air.

NDB Micro Series dryers use the industry standard dual-bed drying concept in a compact single blower configuration. One blower and multi-function valve control both the process and regeneration flow and the heaters are contained within the desiccant beds to minimize space.

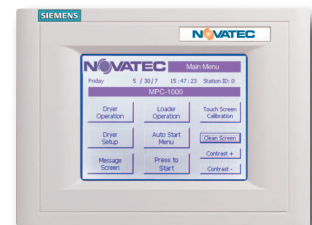
- **Self-Contained Dryer/Hopper Design**  
Twin desiccant beds, integral heaters and a drying hopper are included in a compact unit.
- **Choice of Configurations**  
NDB Micro-Dryers are available in models to mount on a floor stand; directly on a machine throat or as a Dry/Convey package.
- **Compact Design**  
One blower and a multi-function valve control both the process and regeneration heaters which are contained within the desiccant beds to save space.
- **Integrated Drying Hoppers**  
Stainless steel insulated hoppers with large access door and sight glass [200 lb.(90 kg) hopper is carbon steel and the 15 lb. (7kg) hopper has no access door].
- **Electromechanical Control Standard:**
  - Over-temperature alarm and shutdown with indication
  - Auto-tune PID temperature control with dual LED display
  - Calibration feature and set point secure switch
  - Full function graphic display.
- **NovaTouch™ Touch Panel Siemens PLC Control**  
A popular option on standard packages and standard on Dry/Convey Packages.

#### Plus:

- Standard voltage: 115/1/60 for NDB-15, 460/1/60 for NDB-25, 460/3/60 for NDB-50
- Cyclonic 2 stage process filter
- High heat up to 350° F (cooling coil required over 225° F)
- Tubular Incoloy® sheath heaters
- Nema 1 enclosure
- Main line contactor
- 13X Desiccant
- Slide gate shut off
- Analog thermometer at hopper inlet
- 2-Year warranty



NDB-MM-50 shown with Electromechanical Control

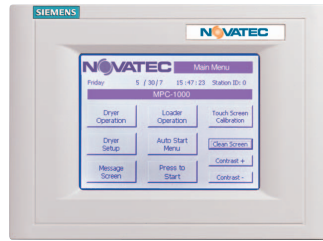


Optional NovaTouch™ Touch Panel Siemens PLC Control

# Optional NovaTouch™ Touch Panel PLC

To enhance the command and control of your NBD series dryers, NOVATEC offers the optional NovaTouch PLC touch panel with outstanding benefits & features.

- Easy-to read touch screen
- Built-in prompts simplify use
- Components available locally
  - Touch panel calibration
  - Contrast/clean screen
  - Multi-level password setup



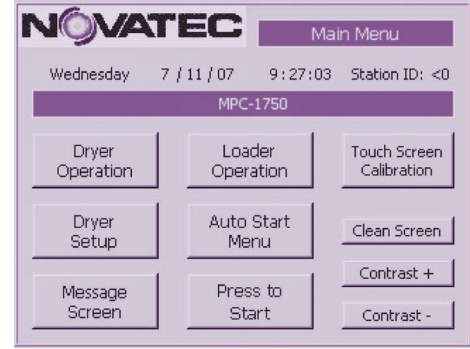
Feature	Electromechanical	NovaTouch
Touch screen technology	X	✓
Control temperature #1	✓	✓
Control temperature – 2nd set point	X	✓
Over-temperature alarm and shutdown	✓	✓
Hygro dew point sensor	X	✓
Real-time clock	X	✓
Seven day timer	X	✓
High/low temperature alarm	X	✓
Bed status	✓	✓
Auto start/stop	X	✓
Warning and error messages	X	✓
Dew point changeover	X	✓
Blower differential pressure switch	X	✓
Calibration feature and set point secure	X	✓
Set deviation limits	X	✓
Language capabilities	X	✓
PLC diagnostics	X	✓
Adjust PID settings	X	✓
Dynamic cool	X	✓
NEMA 12 enclosure	X	✓
Loader operation	X	*

Note: On standard NBD packages with electromechanical controls, loader operation is controlled by a LOGO! Mini-PLC. The optional NovaTouch, when chosen, controls loader operation.

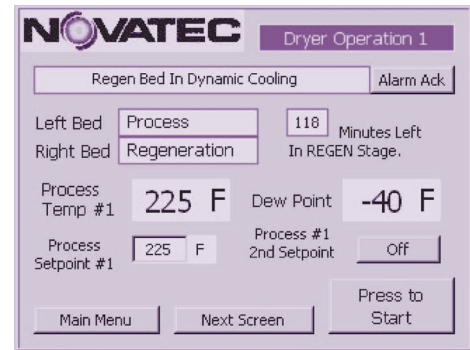
## \*NovaTouch™ Custom Options:

- Plug and play communications modules for Modem Modbus, Profibus and MPI are inexpensive and easily added options. Ethernet, with or without embedded web page, DeviceNet, Canbus and ASI protocols are available.
- EEPROM memory card
- Battery backup for real-time clock
- Custom setup for:
  - Moisture Manager (Patent number 6,289,606)
  - Energy Saver

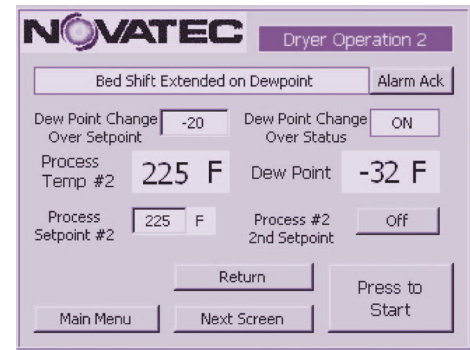
\* Contact Novatec for more information.



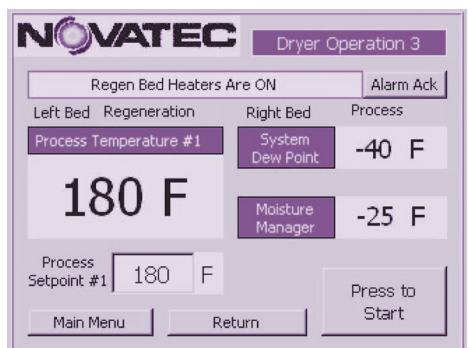
Main menu provides access to operation screens displaying parameter entry points.



Dryer Operation 1 displays bed status, process temperatures and dew point.



Dryer Operation 2 displays system status, dew point changeover set point and status.



Dryer Operation 3 displays system status, bed status and dew point for the optional Moisture Manager.

**Options:** Show as separate line item on order. See Price List # 100

- **NovaTouch™ PLC Control:** Add “-N” after main part number
- **Dew Point Meter:** Part Number aedpNDB
- **7-Day Timer:** Part Number ae7dtNDB
- **Alternate Hopper Size:** See chart below
- **Alternate Voltage:** 575V (See chart below for NDB standard model alternate voltage part numbers)

Standard Dryer Part Number	Standard Hopper Size		Alternate Hopper Size		Part Number for Alternate Hopper	Optional 575 Voltage Part Number
	lb.	kg	lb.	kg		
<b>NDB-15</b>	60	27.3	15	6.8	HOPP-NBD15-15	Not Available
			30	13.6	HOPP-NDB15-30	
<b>NDB-25</b>	100	45.5	60	27.3	HOPP-NDB25-60	VOLT-NDB25-56 (1ph)
<b>NDB-50</b>	200	91	–	–	Not Available	VOLT-NDB100-57 (3ph)

**Accessories:** (Shipped separately – show as separate line item on order. See Price List #100)

- **Floor Stand:** For NDB-15 and NDB-25, Part Number FS-NDB-1  
For NDB-50, Part Number FS-NDB-2
- **Floor Stand Casters:** 5” (set of 4), Part Number ashm10
- **Short Run Diffuser Tube:** Part Number SRD-2
- **Capacitance Bracket Only:** CAPB-R
- **Capacitance Switch:** 24VDC= Part Number LSC-30. 115VAC= Part Number LSC-30-12
- **Cooling Coil:** Required when process temperature over 225° F. (107° C.) (See Part Number below)
- **Vacuum take-off boxes** – See separate data sheet and price list #355

Standard Dryer Part Number	*Throughput Capacity Up To		**Cooling Coil	
	lb./hr.	kg/hr	Without Plasticizer Trap	With Plasticizer Trap
<b>NDB-15</b>	15	7	CC-1	CCP-1
<b>NDB-25</b>	25	11	CC-1	CCP-1
<b>NDB-50</b>	100	22	CC-2	CCP-2

\* Nominal throughput, based on polycarbonate pellets at 38 lb./ft<sup>3</sup>.

\*\* Cooling coil is required for process temperature above 250° F. (120° C) and is shipped complete with mounting hardware.

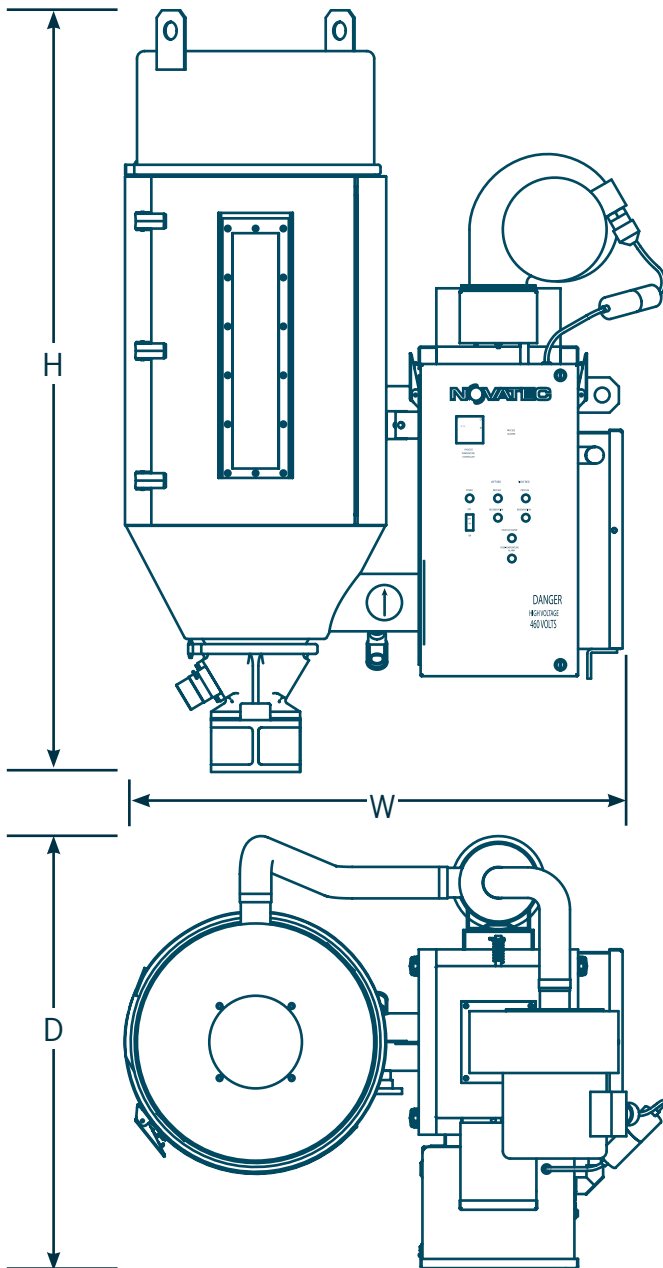
**Dry/Convey Packages available as NDB-15-DC, NDB-25-DC and NDB-50-DC & include:**

- VR-5 machine-mount vacuum receiver, regenerative blower, VL-3 Loader, line purge device,
- 1.5” probe & floor stand w/ 5” casters
- NovaTouch PLC control
- Floor stand with 5” casters
- Insulated hopper with return air pellet screen
- Process heater at dryer
- Standard voltage: 460/3/60 (See separate data sheet and Price list #100)
- Alternate 575/3/60 voltage : For NDB-15-DC use VOLT-ND-15-57,  
for NDB-25-DC use VOLT-NDB25-DC-57, for NDB-50-DC use NDB-50-DC-57

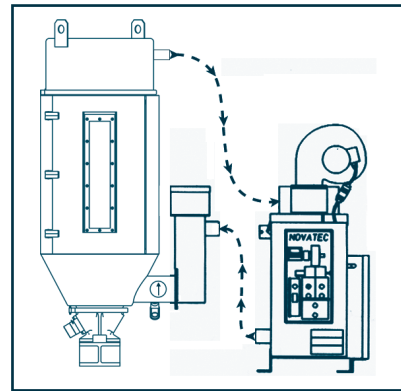
# Specifications

Dryer Part Number	Process Rate		Overall Dimensions						Process Air Duct Diameter		Weight	
			W		D		H					
	lb./hr.	kg/hr.	in.	cm	in.	cm	in.	cm	in.	cm	lb.	kg
NDB-15	15	7	35	89	29	74	42	107	3.875	9.84	490	222
NDB-25	25	11	35	89	29	74	50	127	3.875	9.84	530	241
NDB-50	50	22	43	109	30	76	60	153	5.875	14.92	725	329

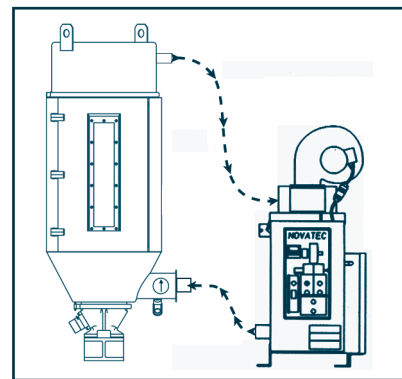
## Standard NDB Micro Configuration



## Custom\* NDB Micro Configurations



A separate drying hopper equipped with a process heater, thermometer, power cord for the process heater and a 20 ft. (6m) thermocouple connection is designed to mount on the process machine utilizing an optional adapter. It can also be mounted on a floor stand.



The hopper can be mounted on a floor stand or directly on process machine and the process heater is in the dryer.

*\* Custom configurations are priced accordingly and lead times are extended.*

Accepting MasterCard, VISA and American Express