

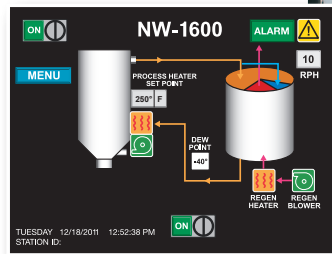
## Color Touch Screen Control Now Standard

Replace energy-hog Dual-Bed and Carousel Dryers\* with NW Series Dryers – now with standard color touch screen.

Failure to reduce production costs, can be a costly error during these times and there are multiple reasons that you should use NovaWheel dryers to reduce one of the few costs within your control – energy costs. Old dual bed and Carousel dryers use huge amounts of energy compared to the NovaWheel and those increased costs lose customers, cause layoffs and kill profits.

- **Intuitive 5.7" Color Touch Screen Control, Standard**

Provides easy access all the most popular features that processors want at no additional cost.



- **Chain Drive for Long Life and Drying Uniformity**

Marginal belts used by other manufacturers stretch - The NOVATEC lifetime chain drive ensures more uniform regeneration of the desiccant and reduced maintenance.

- **The Ultimate In Process Stability**

Uniform process and regeneration heating ensures constant -40° dew point with no spikes or deviations.

- **Eliminates The Need For Desiccant Beads**

No more desiccant dusting.

- **Reduced Energy Usage**

- Smaller mass of desiccant to heat.
- Fewer metal surfaces to absorb and waste heat.

- **NovaWheel Occupies Less Floor Space Than Comparable Dual Bed Dryers**

– Compact, aesthetically-pleasing design.

- **Significant Reduction of Maintenance and Parts Costs Compared To Either Carousel or Dual Bed Dryers**

- Fewer moving parts for simpler operation.
- No valves.
- Filter elements easily accessible.

- **Central Dryer Packages**

Available on all models NW-1600NC and up



NW-1600NC with 5.7" Color Touch Screen Control as standard

### Additional Features:

- -40° Dew point guaranteed
- Process and regeneration blower flow switches
- Heater over-temperature switches and alarm light
- Separate process and regeneration blowers
- Branch line fusing
- Long life heaters
- Process temperatures up to 350°F (177°C) with interlock to heaters
- Open access to all components
- Dew point sensor for process air
- Pre-cooler (Return air)
- Plasticizer filter with drain
- 2-Year Warranty

# NovaTouch™ Color Touch Panel PLC Standard

- *Easy touch operation* • *Easy touch monitoring*

Touch screen simplifies setup with easy prompts.



5.7" Color touch screen is standard on NW-1600NC and up

### \*Optional Communications Capabilities:

- Ethernet with or without embedded web page
- Modbus
- Modem
- MPI
- Profibus
- DeviceNet
- ASI

\*As a PLC based option

### Major features:

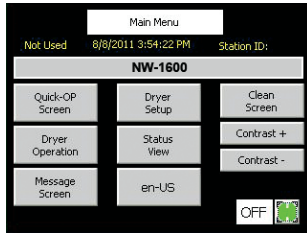
- Intuitive Touch Screen for ease of operation
- No confusing alarm codes to look up
- Seven day timer - for auto on/off
- Filter maintenance alerts with oversized filters
- Set points with deviation limits
- Dew point sensor
- Controls loader operation
- Real-time clock with battery backup
- Ethernet option

### *NovaTouch control at no extra charge!*

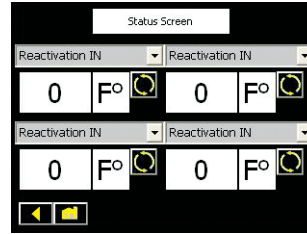
Features	NovaTouch Color
Touch Screen Entry	Standard
Control Temperature #1	Standard
Second Set-point	Standard
Over-temperature Alarm and Shutdown	Standard
Hygro Dew Point Sensor	Standard
Real Time Clock	Standard
Seven Day Timer	Standard
Auto Start/Stop	Standard
High/Low Temperature Alarm	Standard
Warning and Error Messages	Standard
Battery Backup	Standard
EEPROM	Standard
Blower Differential Pressure Switch	Standard
Calibration Feature and Set Point Secure	Standard
Set Deviation Limits	Standard
Language Capabilities	Standard
PLC Diagnostics	Standard
Adjust PID Settings	Standard
NEMA 12 Enclosure	Standard
Loader Operation	Standard

See online video at:  
[www.novatec.com/touchvideo](http://www.novatec.com/touchvideo)

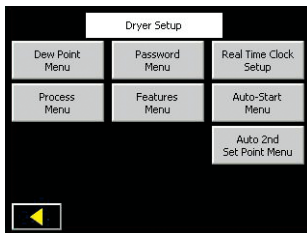
# Intuitive Touch Screen Control



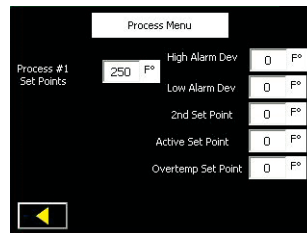
**Main Menu**  
Your quick path to all dryer operations.



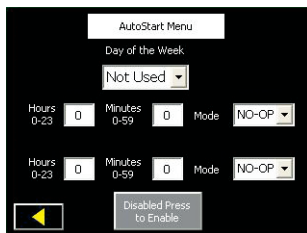
**Status Screen**  
Monitor multiple parameters on one screen.



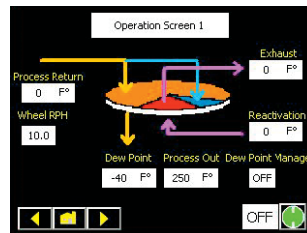
**Dryer Setup**  
Align your dryer's operation and monitoring to your operation and needs.



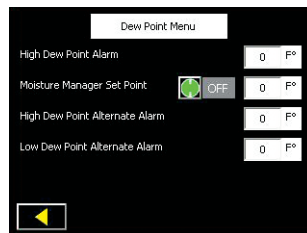
**Process Menu**  
Enter first and second set points and deviation alarm points.



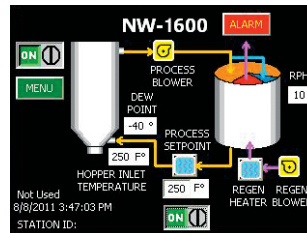
**AutoStart Menu**  
Automatically start and stop dryer to accommodate work schedule.



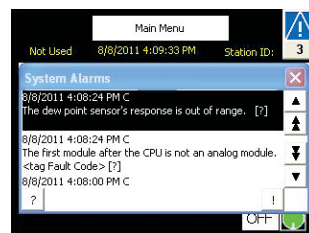
**Operation Screen**  
Super clear visual of dryer operation. Critical parameters at a glance.



**Dew Point Menu**  
Monitor dew point and set alarm levels to avoid over drying or under drying. Control dew point with MoistureManager™ option.



**Quick Op Alarm**  
Graphic representation of the entire drying process and rapid access to critical parameters.

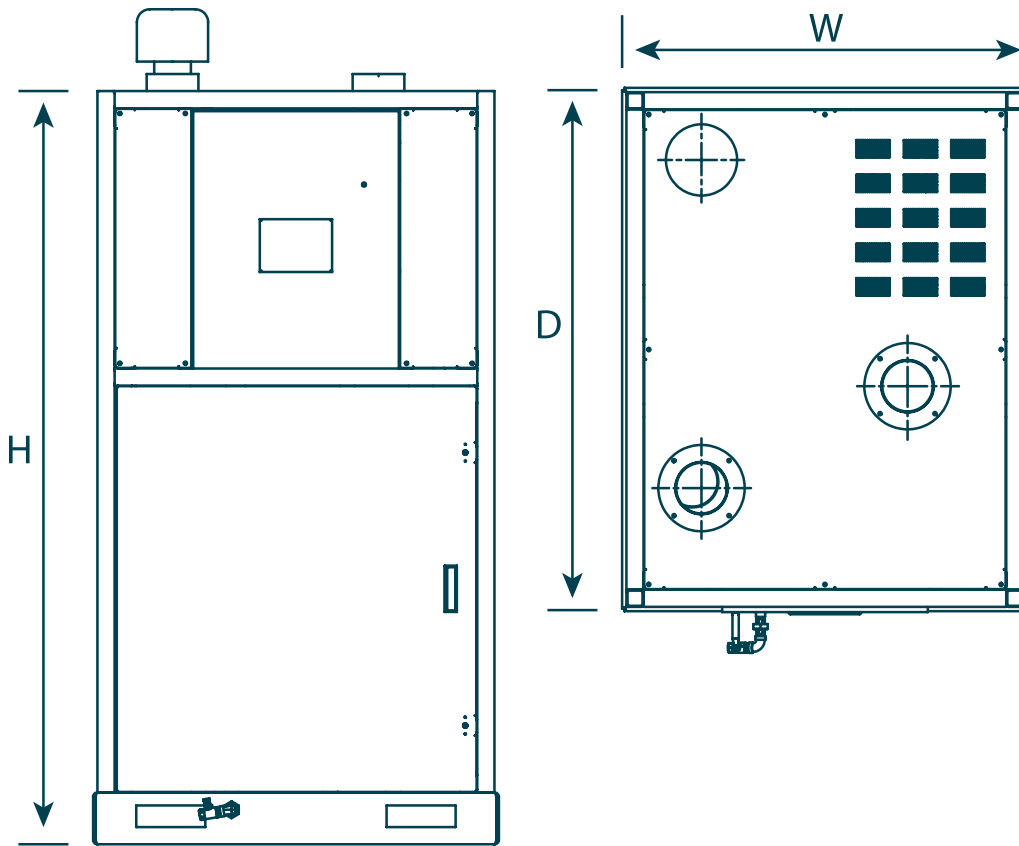


**Alarm Screen**  
Flashing alarm icon with common sense explanation of alarms with date and time stamp.

# Specifications

Part Number	Width		Depth		Height		Air Connection		Throughput Capacity *	Throughput Capacity @ 415/3/50** (no charge)		Throughput Capacity @ 575/3/60**	
	in.	cm	in.	cm	in.	cm	in.	cm	lb. / hr.	kg/ hr.	Part # for 415/3/50	kg/ hr.	Part # for 575/3/60-ESA
<b>NW-1600NC</b>	62	158	86	218	101	257	8	20.3	1600	596	VOLT-NW1600-40	727	VOLT-NW1600-57
<b>NW-2000NC</b>	62	158	86	218	101	257			2000	727	VOLT-NW2000-40	910	VOLT-NW2000-57
<b>NW-2500NC</b>	77	196	92	234	98	249	12	30.5	2500	950	VOLT-NW2500-40	1140	VOLT-NW2500-57
<b>NW-3000NC</b>	77	196	92	234	98	249			3000	1091	VOLT-NW3000-40	1364	VOLT-NW3000-57
<b>NW-3800NC</b>	77	196	105	267	110	279			3800	1382	VOLT-NW3800-40	1727	VOLT-NW3800-57
<b>NW-5000NC</b>	77	196	105	267	110	279			5000	1818	VOLT-NW5000-40	2272	VOLT-NW5000-57

\* Throughput capacity @ 460V/3ph/60Hz standard voltage - Based on polycarbonate pellets @ 38 lb./ft<sup>3</sup>



**Central Dryer Packages:** (No Process Heater/Contactors – See price list #103)  
Available on models NW-1600NC and higher. (See Central Drying Data Sheet)  
Add “-C” to end of main part number (for instance NW-1600NC-C)

**Accessories:** (Separate line item on order. Shipped separately.)  
See price list #103)

**External process air cooling coil on stand:**

	Cooling Coil only	Cooling Coil w/Plasticizer Filter
NW-1600NC and NW-2000NC	CC-8S	CCP-8S
NW-3000NC to NW-5000NC	CC-9S	CCP-9S

Drying temperatures less than 170°F (77°C) requires external process air cooling coil.

## Options:

(Separate line item on order. See price list #103)

\*\* **Alternate Voltages:** See chart above for part numbers.

415/3/50 No charge

575/3/60-ESA

**Networking capability for NovaTouch Color Control:**

ColorNet™ Networkable Color HMI: Part # HMI-6S-ColorNet