

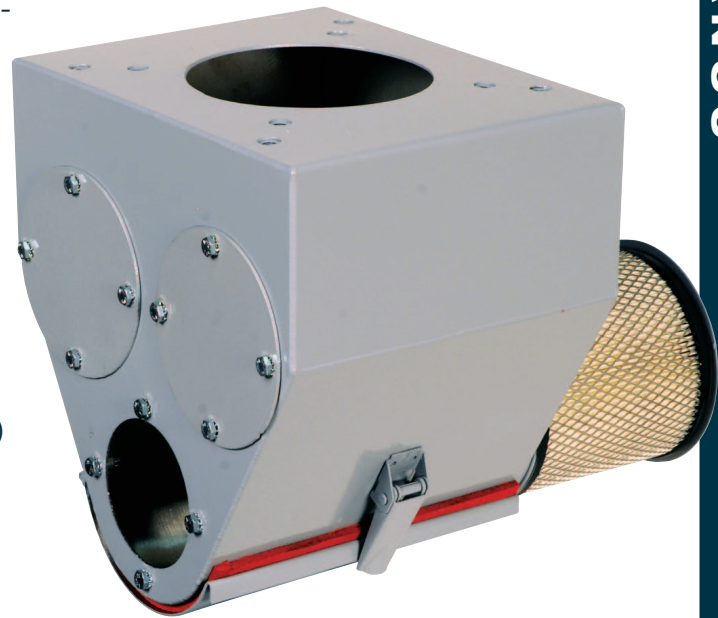
### VTB series vacuum take-off boxes provide connection(s) for vacuum conveying from a drying hopper, surge bin or other material vessel.

The VTB series (except VTB-14) are equipped with one or more cartridge filters to provide air inside the box for conveying. Standard probes allow hard-plumbing directly to stationary conveying lines, eliminating the need for flex hose. The Dry Air Conveying accessory provides a stub for connection to a dry air source in place of the cartridge filter. To optimize material flow, an external carburetor collar around the material outlet provides air adjustment.

- **Durable Construction**  
Heavy gauge stainless steel (aluminum for VTB-14) painted NOVATEC silver.
- **Easy Cleanout**  
Tool-less full-opening cleanout door on the bottom.
- **Ambient or Dry Air Conveying**  
A cartridge filter is used for ambient air conveying or choose probes and stub designed for dry air conveying.
- **Standard and Dry Air Probes**  
Choose either standard aluminum or stainless steel probes with a rotating collar for air adjustment to modulate material flow – or aluminum dry air convey probes.
- **Choose Number of Positions and Line Size**  
Choose from 1-5 positions and line size from 1.5 to 3”.
- **Silo/Surge Bin Model**  
The VTB-14, single position, with all aluminum construction makes it ideal for higher volume surge bin or silo use.

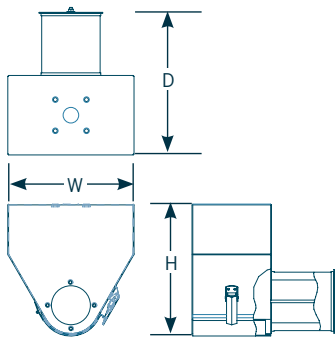
**Plus:**

Mounting hardware is included for installation ease  
Square mounting flange with square bolt-hole pattern  
2-Year warranty.

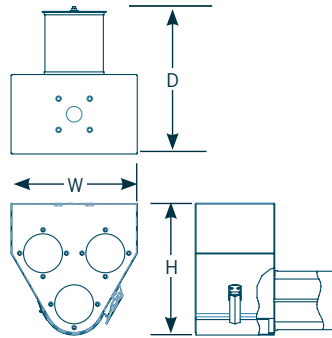


# Specifications

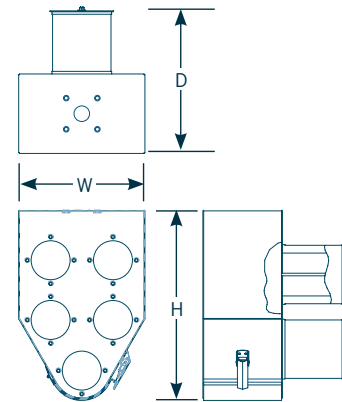
Model Number	Width		Depth		Height		Number of Positions	Square Bolt Hole Pattern		Top Opening I.D.	
	in.	mm	in.	mm	in.	mm		in.	mm	in.	mm
VTB-3-1	8	203	12.3	313	8.2	208	1	3	76	1.5	38
VTB-3-3	12	305	14.2	361	12.7	323	2/3				
VTB-3-5	12	305	14.2	361	18.3	465	4/5				
VTB-4-1	8	203	12.3	313	8.2	208	1	4.75 & 6	121 & 152	4.13	105
VTB-4-3	12	305	14.2	361	12.7	323	2/3				
VTB-4-5	12	305	14.2	361	18.3	465	4/5				
VTB-8-1	12	305	14.2	361	10.2	465	1	8	203	6	152
VTB-8-3	12	305	16.2	412	12.7	259	2/3				
VTB-8-5	12	305	16.2	412	18.3	323	4/5				
VTB-9-1	12	305	16.8	427	10.2	465	1	9.75	248	8	203
VTB-9-3	12	305	18.7	475	12.7	259	2/3				
VTB-9-5	12	305	18.7	475	18.3	323	4/5				
VTB-14-1	15.3	389	15.3	389	7.8	198	1	14	356	12sq.	305 sq.



1 Position VTB



2/3 Position VTB



4/5 Position VTB

## Accessories:

(Shipped separately. Show as separate line item on order.) See price list #355.

### Probes: Aluminum, Stainless Steel, Dry Air Probe\*, Dry Air Stub\*\*

O.D. in./mm	Aluminum	Stainless Steel	Dry Air Probe*
1.5/40	avpal-15	avpss-15	avpalda-15
2.0/50	avpal-20	avpss-20	avpalda-20
2.5/65	avpal-25	avpss-25	avpalda-25
3.0/75	avpal-30	avpss-30	avpalda-30

Material probes with adjustable air flow, 1.5" - 4" O.D.



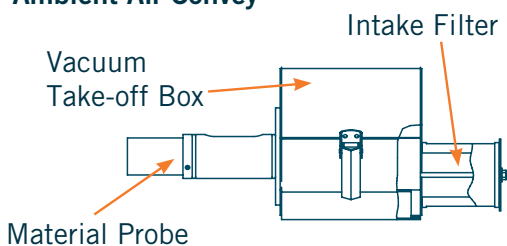
\* Choose dry air probe in addition to dry air stub for dry air convey.

\*\* Choose dry air stub for dry air conveying in lieu of the standard cartridge filter.

Not available on VTB-14-1.

**Dry Air Stub	Positions per box
adac-35	1
adac-58	2-3 and 4-5

### Ambient Air Convey



### Dry Air Convey

