

### The FlexTouch FTS control series provides full featured control in an economical 'fixed I/O' package.

The FlexTouch FTS series is a PLC based, centrally installed, touch screen, central loading control featuring intuitive operation in a compact, economical package. All receivers, pumps and purge valves connect to this single enclosure via traditional "home run" wiring. Choose either a monochrome or color touch screen.

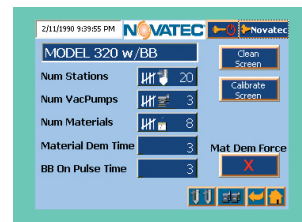
- Central PLC-Based Control**  
 Includes touch screen, control of loading, pumps and purge.
- Intuitive Operation**  
 Simplified graphics require no special user training.
- Two Touch Screens Available**  
 Choose a diagonally-measured 4" monochrome or a 5.7" color touch screen with vivid icons that show system functions.
- Proportioning Standard**  
 Proportioning control is included at no additional cost. (See notes 1, page 136A)
- Ethernet Capability**  
 All color touch screen controls can be equipped with Ethernet capability so they may be readily networked to PC(s) anywhere.

**Plus:**

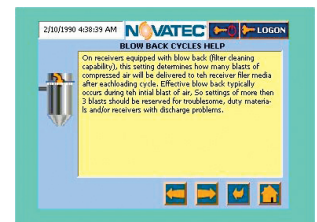
- 24 VDC inputs & outputs
- 115/1/60 Volt standard (230 V optional)
- Audible and visual alarms on the control face
- 2-Year warranty



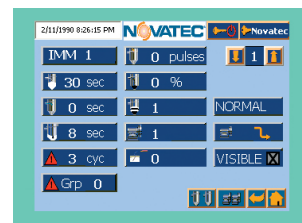
Helpful Touch-Screen Control available in monochrome or color



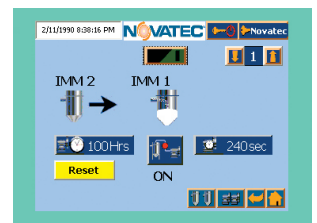
SYSTEM SETUP



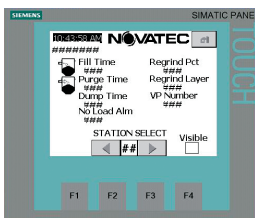
HELP SCREEN



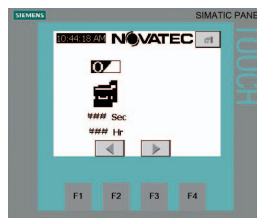
STATION SETUP



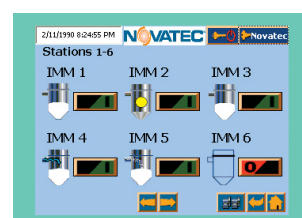
VACUUM PUMP SETUP



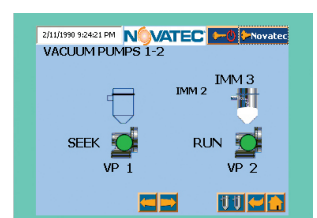
MONOCHROME STATION SETUP



MONOCHROME VACUUM PUMP SETUP



STATION STATUS



VACUUM PUMP STATUS

# Specifications

Model	Touch Screen Control	Number of Pumps	Number of Receivers	Number of Purge Valves
FTS-105-0-4M	4" Monochrome	1	up to 5	0
FTS-210-6-4M	4" Monochrome	2	up to 10	6
FTS-210-6-6C	5.7" Color			
FTS-320-8-4M	4" Monochrome	3	up to 20	8
FTS-320-8-6C	5.7" Color			
FTS-334-10-4M	4" Monochrome	3	up to 34	10
FTS-334-10-6C	5.7" Color			

## Options:

(Show as separate line items on order. See Price List # 342)

### Blowback outputs for receivers:

(Must be factory installed)

For up to 5 receivers – Part# BBOM-FTS-5

For up to 10 receivers – Part# BBOM-FTS-10

For up to 16 receivers – Part# BBOM-FTS-16

For up to 32 receivers – Part# BBOM-FTS-32

### 115V I/O for existing systems:

(Must be factory installed)

FTS-105-0 - Part # VOLT-105-12

FTS-210-6 - Part # VOLT-210-12

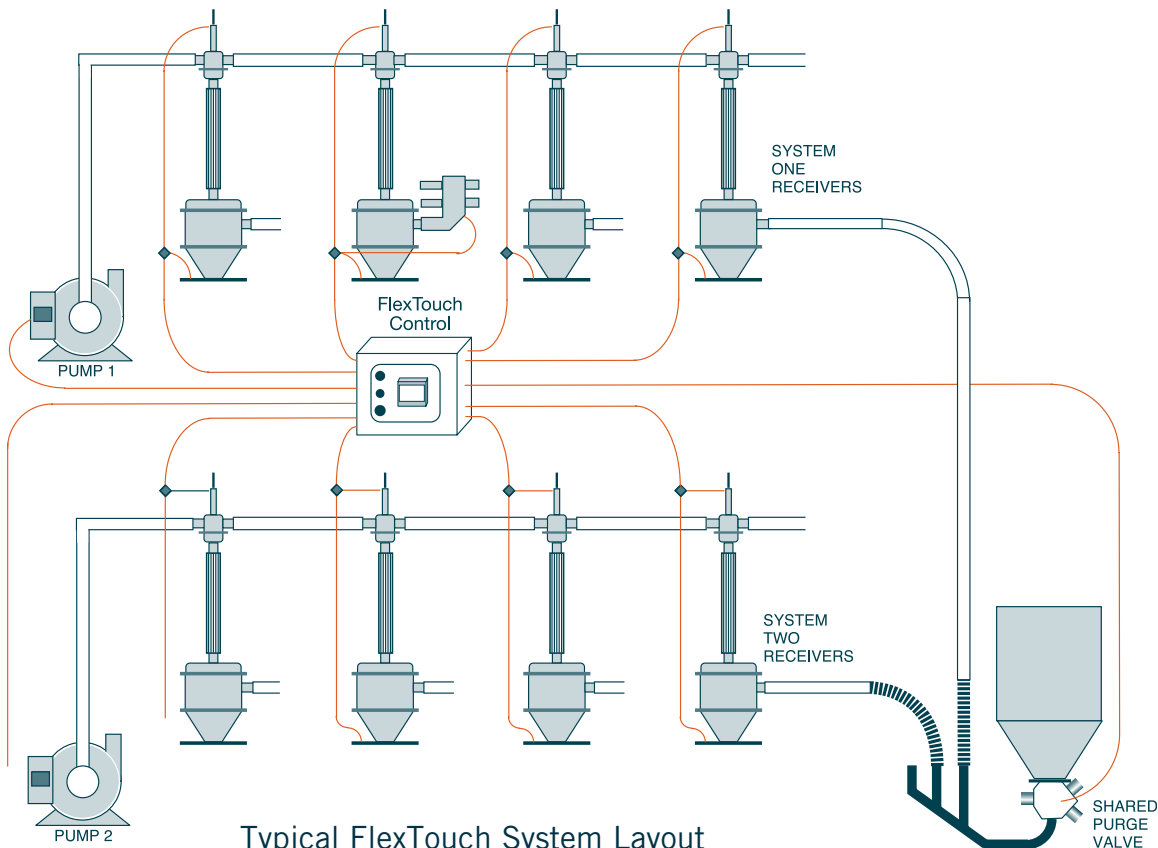
FTS-320-8 - Part # VOLT-320-12

FTS-334-10 - Part # VOLT-334-12

### Note 1

Separate proportional settings may be made for each optional proportioning receiver within each pump system, but all valves in that system are connected with a common signal. In operation, all proportioning valves within that pump system operate at the same time.

- **ColorNet™ Networkable Color HMI:** (Upgrade for 5.7" color touch screen) Part # HMI-6S-ColorNet
- **Input power:** (in lieu of 115 V standard) 230/1/50/60 Part# VOLT-FTS-21
- **Alarm strobe:** (must match panel I/O voltage)  
115 V Part # kit-strobe-12    230 V Part # kit-strobe-24



Typical FlexTouch System Layout