



GlassVu™ Self Contained Blender Loaders

Modular, self-contained loaders provide vacuum transfer of plastic pellets and regrind to blender hoppers and bins.

GVL Loaders have a built-in control with basic functions. Optional remote pendant control for additional functions of proportioning and purging works on multiple loaders.



Full View of Loading for Easy Setup and Monitoring

Clear borosilicate glass center section

Built-in Microprocessor Control

Includes load time, no-load alarm, alarm light and silencer

Easy Access and Cleaning

Hinged, slanted top

Flawless Evacuation

Positive sealing, pneumatic, angled, bridge-breaking discharge with no cone – assures fast evacuation

Convenient Installation

Inlet rotates 360°

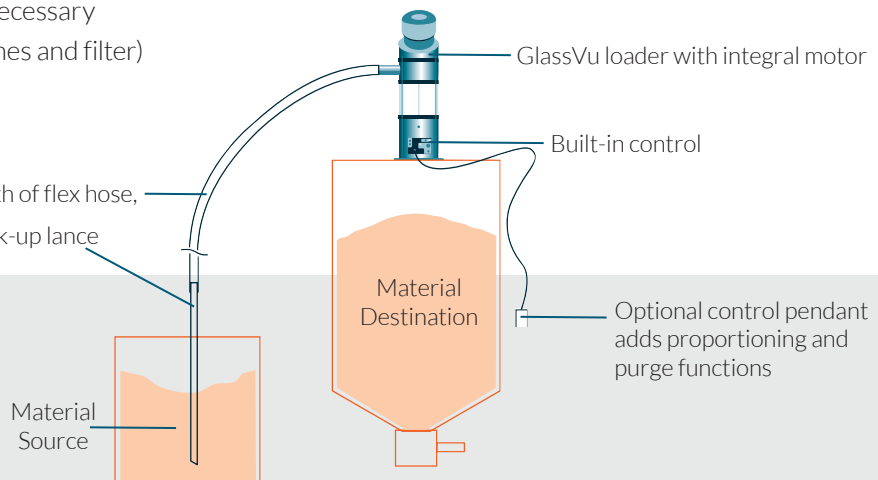
Nothing Protrudes Below Flat Bottom

No fragile parts to be damaged and no loss of hopper/bin volume

- › Positive sealing, pneumatic discharge valve
- › Tangential loading provides mechanical air separation
- › Convenient carrying handle
- › Powerful blowback minimizes filter clogging
- › Infrared sensor below the slide gate signals demand
- › Durable reinforced dacron disc filter with molded edge
- › Cylindrical segments easily changed if necessary
- › 5-Year warranty (excluding motor, brushes and filter)

Application: Optional

{ 15' (4.6m) length of flex hose, clamps and pick-up lance



Specifications:

GVL Series Loader Specifications

Part Number	Capacity*		Volume		Body Diameter		Height**		Base Flange Diameter		Standard Inlet Diameter	
	lb	Kg	ft ³	liters	in	cm	in	cm	in	cm	in	cm
GVL-10	10	4.6	.25	7.1	8	20.3	29	73.7	10.4	26.4	1.5	3.8

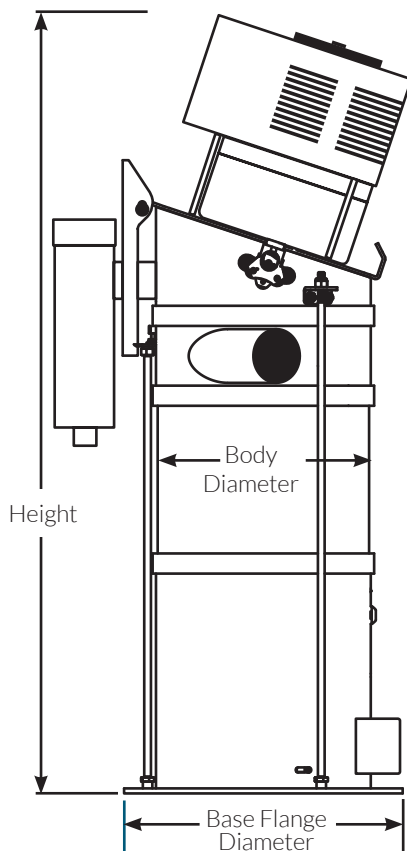
* Based on material bulk density of 38 lb/ft³ (609Kg/m³)

**Open lid requires additional clearance of 4.25" (10.8cm) on GVL-10.

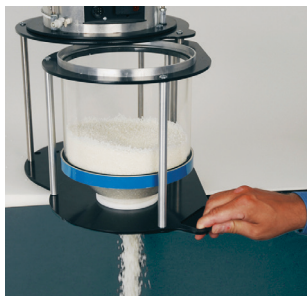
Recommended throughput: up to 200 lb/hr (91Kg/hr)

Options:

Alternate Voltage: (No charge) 220/1/50 (in lieu of 115/1/60) for GVL-10



GlassVu Hopper



Provides machine mount for GV loaders.
Pivots for easy draining and cleaning.
GVH-10 adds 12" (30.5cm) to loader height.

Accessories:

15' (4.6m) length of flex hose and pickup wand

Control Pendant: with 20' (6m) Cable

Control Pendant Cable Only: 20'(6m)



Control Pendant

Adapter for mounting GVL:

on existing Novatec hopper

Adapts to VL-3 pattern:

(NPH-150 and smaller hoppers)

Adapts to VL-38 pattern: (NPH-200 and larger hoppers)

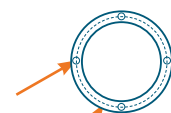
External Proportioning Valve: - 1.5" (3.8 cm) with coupler, pick-up wand, 15' (4.6m) flex hose and clamps:

GlassVu Hopper for Machine Mounting with swing-out hopper: 10 lb (4.5 Kg) capacity for GVL-10

Height-adjustable Level Sensor for GlassVu Hopper

Grate magnets for GlassVu Hopper: Ceramic, rare earth

Bolt Hole Pattern



For GVL-10
4 holes, 5/16" (156mm) dia.
on 9" (230mm) dia. bolt circle