



NovaWheel™ Large Desiccant Wheel Dryers

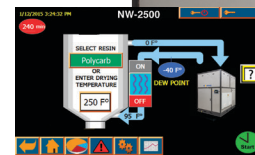
7" high resolution color touch screen PLC now standard for easy operation

Improved design includes intuitive 7" color touch screen control and front access to all filters. Includes pre-cooler for drying temperatures above 250° F. plus plasticizer filter and drain.

Now available with DryerSense™, providing real-time diagnostics and actionable maintenance advice for key dryer components. See DryerSense data sheet.



NW-3800



Color Touch Screen PLC Control Standard

Provides easy access all the most popular features that processors want.

Automatic Monitoring and Alarm of Dryer Filter Condition

Operator is alerted with alarm light when process or regeneration filters need to be cleaned or replaced.

Chain Drive for Long Life and Drying Uniformity

Marginal belts used by other manufacturers stretch - The Novatec lifetime chain drive ensures more uniform regeneration of the desiccant and reduced maintenance

Ethernet Ready Plus SD Card

Smart Ethernet connection with data logging and trending.

ColorNet™ Networking

Allows communications with computers on the same network.

The Ultimate In Process Stability

Uniform process and regeneration heating ensures constant -40° dew point with no spikes or deviations.

Intelligent Regeneration

Monitors and controls the regen inlet and outlet temperatures to optimize energy and dew point performance. Models from -1600 and up employ a variable frequency drive to optimize regen blower speed.

Convenient Front Access To All Filters

Oversized process and regeneration filters, as well as the plasticizer filter are easily accessed from the front.

Eliminates The Need For Desiccant Beads

No more desiccant dusting.

Central Dryer Packages

Available on all models NW-500N and up.

5-Year Warranty

For lowest cost of ownership.

Plus

- › -40° Dew point guaranteed
- › Process and regeneration blower flow switches
- › Heater over-temperature switches and alarm light
- › Separate process and regeneration blowers
- › Branch line fusing
- › Long life heaters
- › Process temperatures up to 350°F (177°C) with interlock to heaters
- › Dew point analyzer with indication and alarm
- › Red/green alarm light
- › After-cooler (Return air)
- › Plasticizer filter with drain
- › 5-Year warranty

NovaTouch™ Color Touch Panel PLC Standard

Easy touch operation • Easy touch monitoring



Quick-ops screen

7" color touch screen PLC standard on NW-2500NC and up

ColorNet™ networking capability for NovaTouch color control - standard

*** Optional communications capabilities:**

- › Modem
- › MPI
- › Profibus
- › DeviceNet
- › ASI

*As a PLC based option

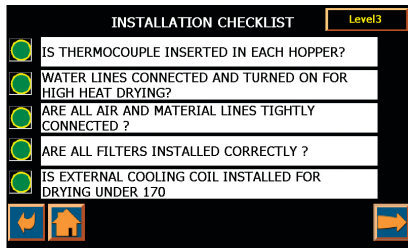
Touch screen simplifies setup with easy prompts.

Main Features:

- Intuitive touch screen for ease of operation
- No confusing alarm codes to look up
- Seven day timer - for auto on/off
- Filter maintenance alerts with oversized filters
- Set points with deviation limits
- Dew point sensor
- Real-time clock with battery backup

Features	NovaTouch Control
Touch Screen Entry	Standard
Control Temperature #1	Standard
Second Set-point	Standard
Over-temperature Alarm and Shutdown	Standard
Hygro Dew Point Sensor	Standard
Real Time Clock	Standard
Seven Day Timer	Standard
Auto Start/Stop	Standard
High/Low Temperature Alarm	Standard
Warning and Error Messages	Standard
Battery Backup	Standard
EEPROM	Standard
Blower Differential Pressure Switch	Standard
Calibration Feature and Set Point Secure	Standard
Set Deviation Limits	Standard
Language Capabilities	Standard
PLC Diagnostics	Standard
*Adjust PID Settings	Standard
NEMA 12 Enclosure	Standard

Intuitive Touch Screen Control



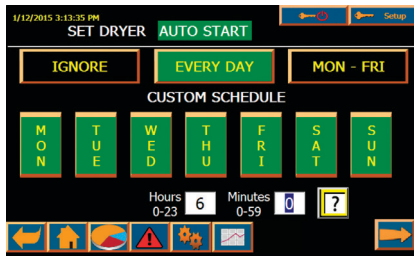
Installation checklist

Reminders of installation procedures for initial start up.



Maintenance schedule

Customize your maintenance schedule based on material being processed.



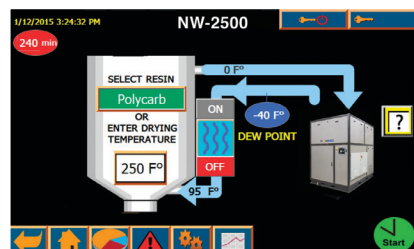
AutoStart menu

Automatically start and stop dryer to accommodate work schedule.



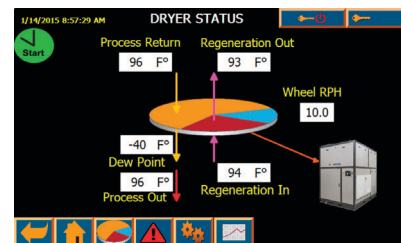
Resin menu

Choose from pre-loaded material list or create your own criteria.



Quick-ops screen

Set drying parameters and view operation.



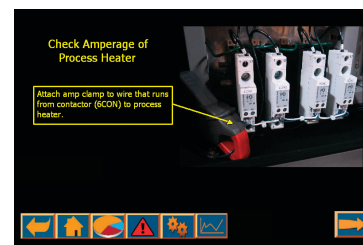
Operation screen

Super clear visual of dryer operation. Critical parameters at a glance.



Troubleshooting guide

Alarms appear with common sense explanation with date and time stamp.



Instruction guide

Troubleshooting instructions are supplemented with photos.



Settings screen

Your quick path to all dryer operations.

Specifications:

Part Number	Width		Depth		Height		Air Connection		Throughput Capacity @		
									460/3/60 VAC**	415/3/50 VAC**	575/3/60 VAC**
	in	cm	in	cm	in	cm	in	cm	lb/hr	Kg/hr	Kg/hr
NW-2500NC	77	196	99	252	95	241	12	30.5	2500	950	1140
NW-3000NC					3000	1091			1364		
*NW-3800NCV			109	277	108	274			3800	1382	1727
NW-5000NC									5000	1818	2272

* NW-3800NCV includes a VFD on the process blower for control optimization.

Central Dryer Packages:

(No process heater/contactors – see price list #103) Add “-C” to end of main part number (for instance NW-800NC-C)

Options:

**** Alternate Voltages:** 415/3/50 (no charge) and 575/3/60-ESA

OverDry Protection: Ensures that sensitive resins, like nylon are not over-dried. (Includes thermocouple and thermocouple module) -up to -3800

Water Saver: Reduces energy usage by ensuring that no more cooling takes place in an external cooling coil than is required.

Conveying to Single Hopper: Adds IO module and terminal block

Conveying to 2 Hoppers: Adds IO modules and terminal blocks

Conveying to 2 Hoppers and 2 Machines:
Adds IO modules and terminal blocks

Gas Fired Process Heater Operation:
Adds IO module and terminal block

Central Dryer Networking with CDA2's:
1 dryer control accessing up to 16 dedicated CDA2's
Up to 4 dryers accessing up to 48 shared CDA2's

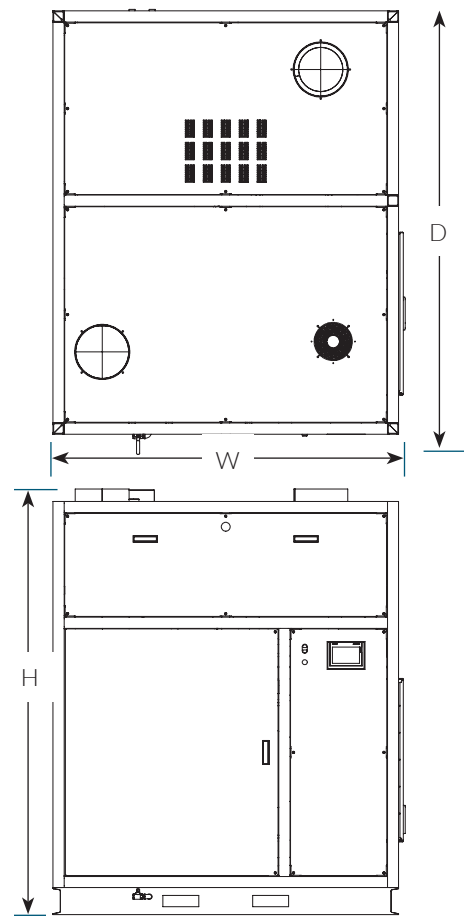
Accessories:

External Process Air Cooling Coil on Stand

Note: drying temperatures less than 170°F (77°C) require an external process air cooling coil.



NW-2500 to -5000



NW-2500 to -5000