



# NovaWheel™ Medium Sized Desiccant Wheel Dryers

## 7" High Resolution Color Touch Screen PLC Now Standard for Easy Operation

Improved design includes intuitive 7" color touch screen control and front access to all filters. Includes pre-cooler for drying temperatures above 250° F plus plasticizer filter and drain.

\*Now available with DryerSense™, providing real-time diagnostics and actionable maintenance advice for key dryer components. See DryerSense data sheet.

### 7" Color Touch Screen Control Standard

Provides easy access all the most popular features that processors want.

### Automatic Monitoring and Alarm of Dryer Filter Condition

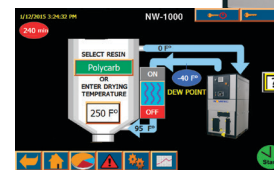
Operator is alerted with alarm light when process or regeneration filters need to be cleaned or replaced.

### Chain Drive for Long Life and Drying Uniformity

Marginal belts used by other manufacturers stretch - The Novatec lifetime chain drive ensures more uniform regeneration of the desiccant and reduced maintenance.

### Ethernet Ready Plus SD Card

Smart Ethernet connection with data logging and trending.



7" Color touch screen PLC



NW-1000NC

### ColorNet™ Networking

Allows communications with computers on the same network.

### The Ultimate In Process Stability

Uniform process and regeneration heating ensures constant -40° dew point with no spikes or deviations.

### Intelligent Regeneration

Monitors and controls the regen inlet and outlet temperatures to optimize energy and dew point performance. Models from -1600 and up employ a variable frequency drive to optimize regen blower speed.

### Eliminates The Need For Desiccant Beads

No more desiccant dusting.

### Convenient Front Access To All Filters

Oversized process and regeneration filters, as well as the plasticizer filter are easily accessed from the front.

### Central Dryer Packages

Available on all models NW-500NC and up.

### 5-Year Warranty

For lowest cost of ownership.

\*Available on NW-1000 and up

#### Plus

- › -40° Dew point guaranteed
- › Process and regeneration blower flow switches
- › Heater over-temperature switches and alarm light
- › Separate process and regeneration blowers
- › Branch line fusing
- › Long life heaters
- › Process temperatures up to 350°F (177°C) with interlock to heaters
- › Dew point analyzer with indication and alarm
- › Red/green alarm light
- › After-cooler (return air)
- › Plasticizer filter with drain
- › 5-Year warranty

# NovaTouch™ color touch panel PLC standard

— 5 —  
YEAR  
warranty

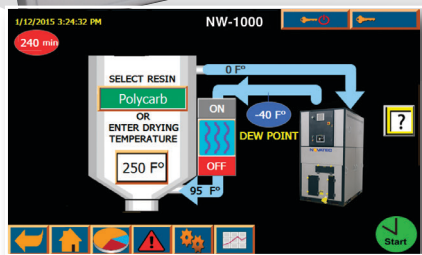


Easy touch operation  
Easy touch monitoring

Touch screen simplifies setup  
with easy prompts.

### Main Features:

- Intuitive touch screen for ease of operation
- No confusing alarm codes to look up
- Seven day timer - for auto on/off
- Filter maintenance alerts with oversized filters
- Set points with deviation limits
- Dew point sensor
- Real-time clock with battery backup



Intuitive 7" color  
touchscreen PLC  
standard on  
NW-500NC  
and up

Quick-ops Screen

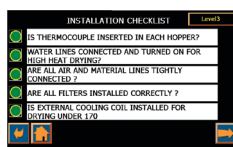
### \*Optional communications capabilities:

- Modem • MPI • Profibus • DeviceNet • ASI

\*As a PLC based option



Easy Setup Menu



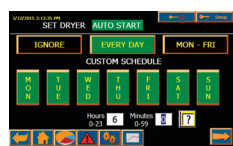
Installation Check List



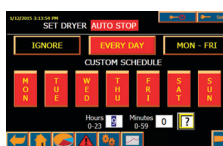
Customize  
Maintenance Schedule



Resin Menu



AutoStart Menu



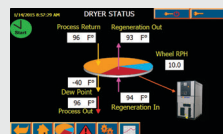
AutoStop Menu



Troubleshooting  
Guide



Instructions for  
Troubleshooting Issues



Status Screen

Features	NovaTouch Control
Touch Screen Entry	Standard
Control Temperature #1	Standard
Second Set-point	Standard
Over-temperature Alarm and Shutdown	Standard
Hygro Dew Point Sensor	Standard
Real Time Clock	Standard
Seven Day Timer	Standard
Auto Start/Stop	Standard
High/Low Temperature Alarm	Standard
Warning and Error Messages	Standard
Battery Backup	Standard
EEPROM	Standard
Blower Differential Pressure Switch	Standard
Calibration Feature and Set Point Secure	Standard
Set Deviation Limits	Standard
Language Capabilities	Standard
PLC Diagnostics	Standard
*Adjust PID Settings	Standard
NEMA 12 Enclosure	Standard

\*By Novatec only

# Convenient Front Access To All Filters



All filters plus plasticizer drain easily accessed.



Easy open latches, no tools required.



Oversized, dual regeneration blower filters.



Oversized, dual process blower filters.



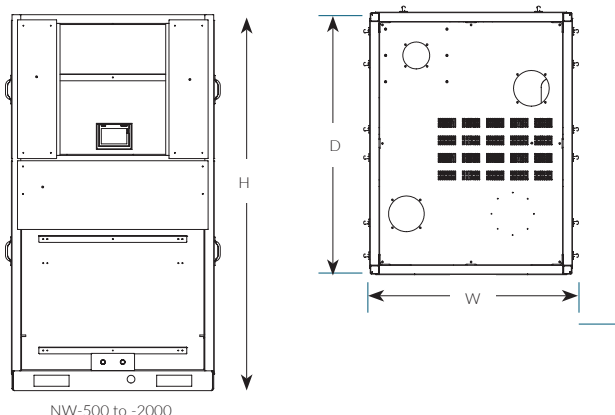
Easily accessed plasticizer filter for cleaning.

## Specifications:

Part Number	Width		Depth		Height		Air Connection		Throughput Capacity @				
	in	cm	in	cm	in	cm	in	cm	460/3/60 VAC**	415/3/50VAC**	575/3/60 VAC**		
									lb/ hr	Kg/ hr	Kg/ hr		
NW-500NC	47	119	65	166	98	249	6	15.2	500	194	227		
NW-600NC									600	232	273		
NW-800NC									800	303	364		
NW-1000NC									8	20.3	1000	380	454
NW-1300NC											1300	490	590
NW-1600NC	62	158	86	218	92	234	8	20.3	1600	596	727		
NW-2000NC									12	30.5	2000	727	910

\*\* Throughput capacity based on polycarbonate pellets @ 38 lb/ft<sup>3</sup>

**Central Dryer Packages:** (No process heater/contactors (See price list #103) Add "-C" to end of main part number (for instance NW-800NC-C)



NW-500 to -2000

## Options:

\*\* **Alternate Voltages:** 415/3/50 (no charge) and 575/3/60-ESA

**OverDry Protection:** Ensures that sensitive resins, like nylon are not over-dried. (includes thermocouple and thermocouple module)

**Water Saver:** Reduces energy usage by ensuring that no more cooling takes place in an external cooling coil than is required

**Conveying to Single Hopper:** Adds IO module and terminal block

**Conveying to 2 Hoppers:** Adds IO modules and terminal blocks

**Conveying to 2 Hoppers and 2 Machines:** Adds IO modules and terminal blocks

**Gas Fired Process Heater Operation:** Adds IO module and terminal block

## Central Dryer Networking with CDA2's:

1 dryer control accessing up to 16 dedicated CDA2's  
Up to 4 dryers accessing up to 48 shared CDA2's

## Accessories:

### External Process Air Cooling Coil on Stand

Note: Drying temperatures less than 170°F (77°C) require an external process air cooling coil.