



Avoiding Wear in Conveying Systems by Controlling Air Speed

Air Flow Regulators- AFR Series (Patent pending)
The AFR's are designed to reduce the velocity of vacuum conveying air which slows the speed of the resin being conveyed to reduce issues like angel hair and tuning wear caused by abrasive materials.

Novatec designed these air flow regulators to match the requirements of specific types of pump and line sizes. When installed, the AFR maintains the minimum vacuum required (max SCFM) to move materials to their destination.



AFR and AFR2

All Stainless Steel Construction

For long life

Easy install

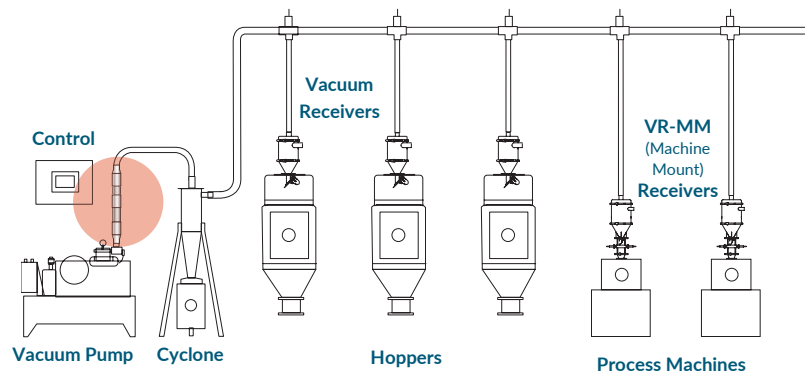
Using bolted couplers

Ideal for 'Purge' Systems

The AFR maintains the target conveying speed for material even when the conveying line is emptied after each cycle.

Balances Performance when Conveying Distance Vary

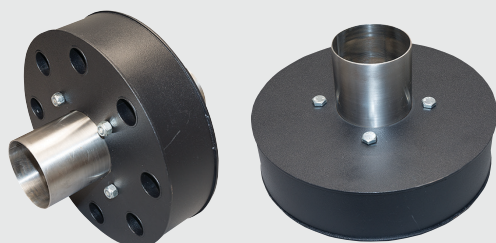
Prevents excessive air speed and related problems that frequently occur when vacuum pumps service stations located beside a material source and those located at remote distances.



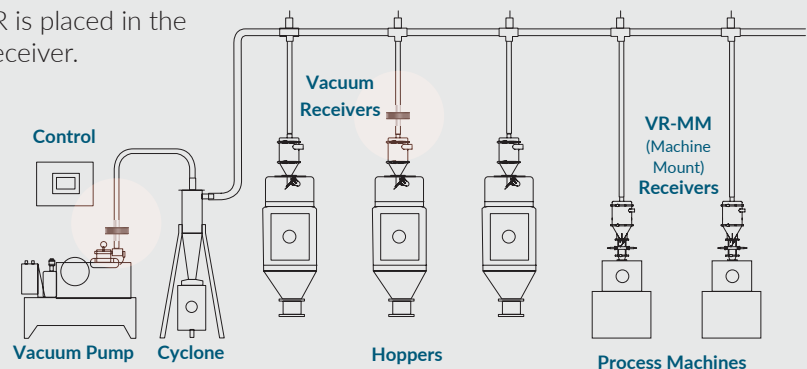
Flow Reducer-Silencer FR-S series

The FR-S is designed to provide an economical solution in situations where vacuum pumps and line sizes are mis-matched. In this case the FR-S is placed between the vacuum pump and the cyclone to reduce the resin velocity for all the stations serviced by that pump.

If there is a need to slow down the speed of a resin before it reaches a particular destination receiver, the FS-R is placed in the vacuum line between the station valve and the receiver.



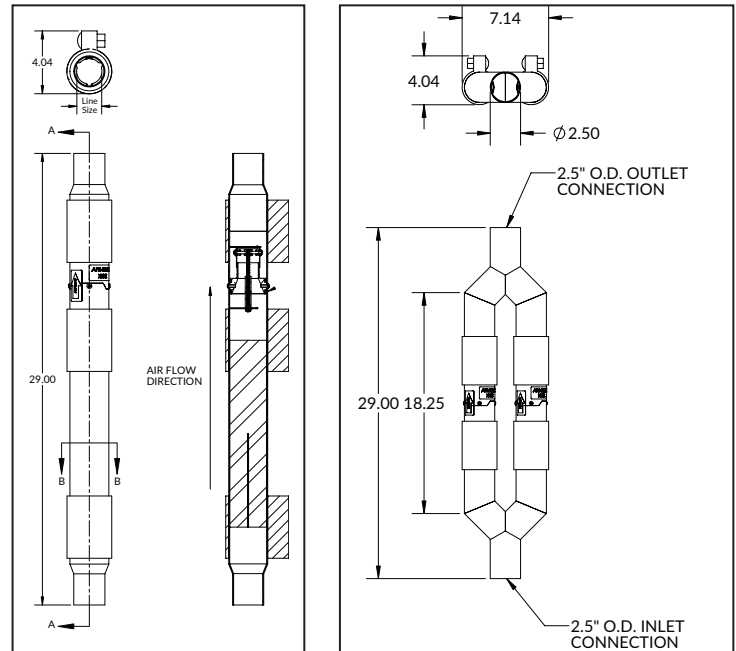
FR-S



AFR Specifications

Part Number	Line Size	Standard Novatec Pump Application
KIT-AFR-15	1.5" OD	VRB, VPD-B, SVP
KIT-AFR-20-PD	2.0" OD	VPDB & SVP
KIT-AFR-20-RB	2.0" OD	VRB
KIT-AFR-20-MVP	2.0" OD	MVP
KIT-AFR2-25-PD	2.5" OD	VPDB & SVP
KIT-AFR2-25-RB	2.5" OD	VRB
KIT-AFR2-25-MVP	2.5" OD	MVP

Consult factory for your particular application.



FR-S Specifications

Part Number	Line Size
FR-S15-XX	1.5" OD
FR-S20-XX	2.0" OD
FR-S25-XX	2.5" OD
FR-S30-XX	3.0" OD
FR-S40-XX	4.5" OD

Consult factory for your particular application. -XX will indicate designed CFM drop at a given vacuum.

