



CL Silo Manager

A Siemens LOGO! PLC monitors the fill levels of between four and twelve aggregate-filled silos using BinMaster ultrasonic sensors which properly calculate angles of repose and drainage.

These values are graphically shown on a 4" color HMI mounted on the control box for the plant operators' use. High and low level alarm set points can be entered from the HMI on a global basis.

— 5 —
YEAR
warranty



Operator Interface

4" color touchscreen PLC.

Graphic Depictions of Silos

Silo levels are shown along with alerts for any high or low alarm conditions.

Multiple Configuration Parameters

Can be set by the operator (alarm set points, etc.)

Over 8 Silos

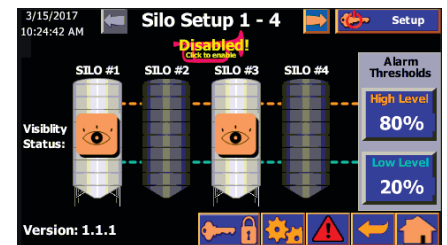
A second PLC will be installed and configured as a "slave".

Alarm History

Alarm history is available for up to 12 silos.

Level Sensors

Four-wire BinMaster™ CDLS ultrasonic sensors mounted on top of each silo transmits the "percentage of fill" to the PLC through a LOGO!

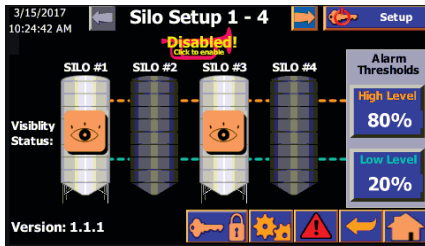


Silo setup is easy with clear icons

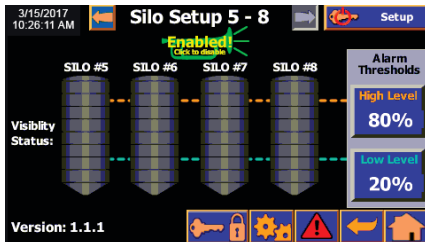
Plus

- › 24VDC, 2.5A Siemens "LOGO! Power" power supply is included.
- › 115/1/50-60 Volt standard
- › (230 VAC optional)
- › 5-Year Warranty for lowest cost of ownership

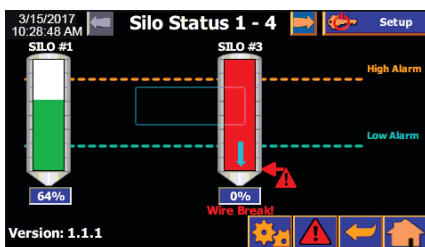
Specifications:



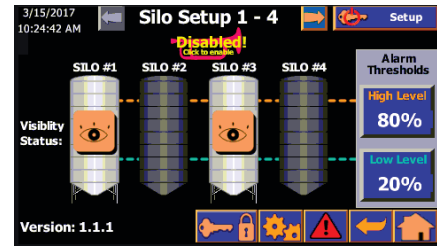
Silo 1 - 4 setup screen (Silo 1 and 3 enabled. Alarm horn disabled)



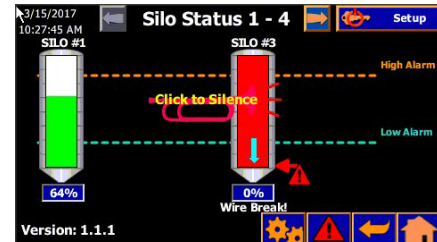
Silo 5 - 8 setup screen (No silos enabled. Alarm horn enabled)



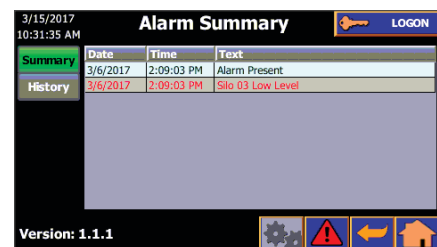
Alarm Silenced



Silo 1 - 4 setup screen (Silo 1 and 3 enabled. Alarm horn disabled)



Silo 3 in alarm (wire-break).
Click horn to silence.



Alarm Summary

Options:

Klaxon Audible Alarm