



FlexTouch FTS Central Conveying Controls

The FlexTouch FTS Control Series provides full featured control in an economical fixed I/O package.

The FlexTouch FTS Series is a PLC based touch screen central loading control, featuring intuitive operation in a compact, economical package. All receivers, pumps and purge valves connect to a single enclosure via discrete wiring.



FlexTouch FTS Touch Control Available with 4" or 7" screen

Central PLC-Based Control

Includes touch screen control of loaders, pumps and purge valves.

Ethernet Capability

All color touch screen controls can be equipped with Ethernet capability to readily network to a PC(s) anywhere.

Two Touch Screens Available

Choose a diagonally-measured 4" or 7" high resolution color touch screen comfort panel with vivid icons that show system functions.

Intuitive Operation

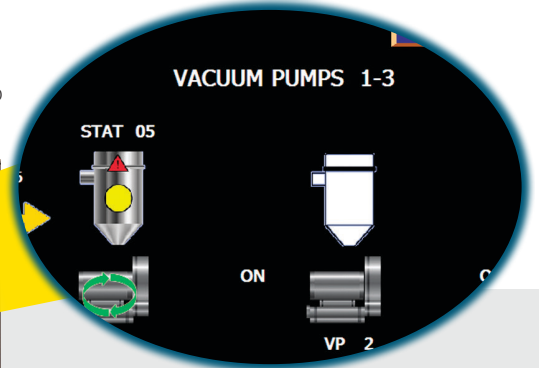
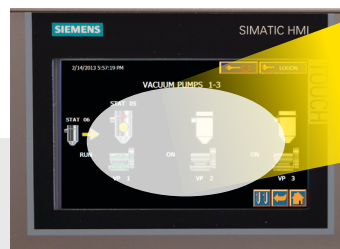
Simplified graphics require no special user training.



Station Setup 7" screen



Vacuum Pump Setup 7" screen



Plus

- › 24 VDC inputs & outputs
- › 115/1/50-60 Volt standard (230 VAC optional)
- › Audible and visual alarms on the control face
- › 5-Year warranty

Specifications:

Model	Touch Screen Control	Number of Pumps	Number of Receivers	Number of Purge Valves	Control Box Dimensions
FTS-105-0-4C	4" Color	1	up to 5	0	18"x18"x8"
FTS-210-6-4C	4" Color	2	up to 10	6	18"x18"x8"
FTS-210-6-7C	7" Color				
FTS-320-8-4C	4" Color	3	up to 20	8	30"x24"x8"
FTS-320-8-7C	7" Color				
FTS-334-10-4C	4" Color	3	up to 34	10	30"x24"x8"
FTS-334-10-7C	7" Color				

Options:

Outputs for receivers:

1 Output per receiver for up to 32 receivers.
(Can be configured as either blowback or proportioning)

115V I/O for existing systems:

(Must be factory installed)
For all models.

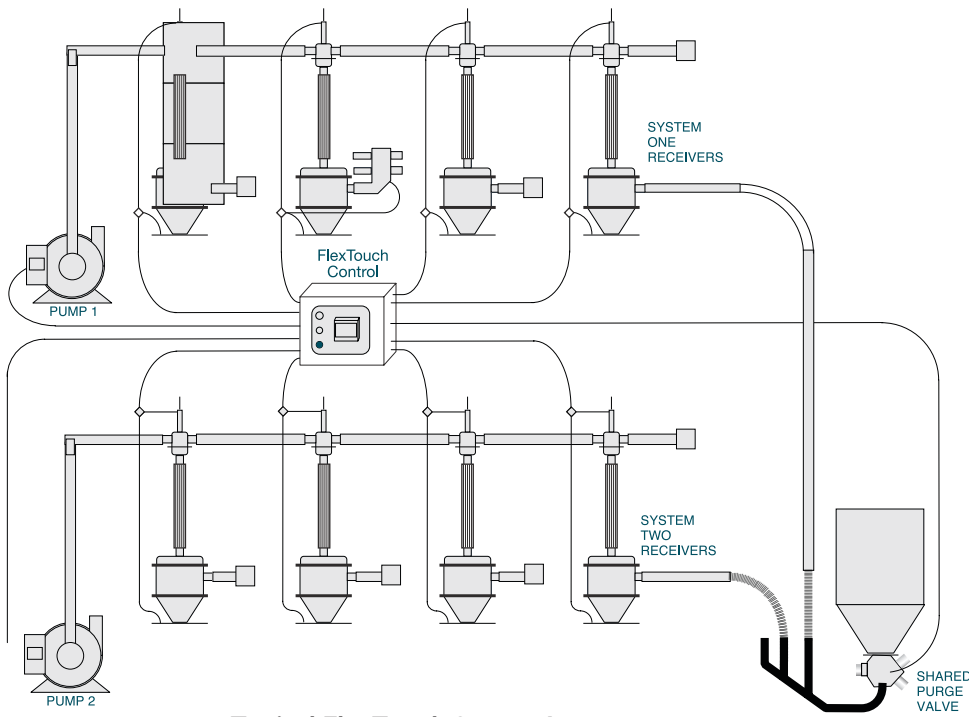
ColorNet™ networkable color HMI required for remote PC access:

(Upgrade for 4" or 7" color touch screen)

Input power: 230/1/50/60 (in lieu of 115 VAC standard)

Alarm strobe: (must match panel I/O voltage)
115 VAC or 24 VDC

Note: Separate proportional settings may be made for each optional proportioning receiver with a pump system, however, all valves within that system are connected by a common signal. In operation, all proportioning valves within a pump system operate at the same time.



Typical FlexTouch System Layout