



Volumetric Color Feeders

Designed for a wide range of throughput rates to meet the needs of injection molding and extrusion processes.

Choose from a range of auger sizes and variable speed motors, coupled with automatic speed control, to meet your feed rate requirements.



— 5 —
YEAR
warranty

Automatic Speed Control

Using digital input, the microprocessor detects and automatically compensates for changing cycle times, varying torque requirements, and/or fluctuations in plant voltage - eliminating the need for monitoring and adjustment

Remote Mounting of Control Option

Allows control to be mounted up to 20' (6 m) from the processing machine for convenience and to reduce weight of equipment bolted to the throat

Materials Metered in Sync with the Processing Machine

For injection molders: Metering motor will turn in response to machine cycles

For Extruders:

Rotation is continuous, in sync with extruder speed and, with an optional digital tachometer (EAC or EDC accessory), feedback is displayed to assure that the feeder motor speed is precisely regulated regardless of changing torque requirements or variations in plant voltage

Easy Color Change

Hopper, auger, and auger tube make up a complete assembly - easily removed, without tools, so no pellets are left behind to contaminate your next color

Practical Hopper Design

Hopper volume is 0.5 ft.³ (14 liters) holding about 30 lb (14 Kg) and includes 4 sight glasses for viewing color level – and an automatic loader can be easily mounted on the lid

Stainless Steel Contact Surfaces

For all color contact surfaces including the hopper and flow chamber baffles

For Extruders running in “continuous” mode, the counter setting will directly regulate motor speed. A digital tach feedback from the motor armature assures that motor speed is precisely held. Uniform dispensing and consistent color is assured: over coloring is eliminated.

Calibration

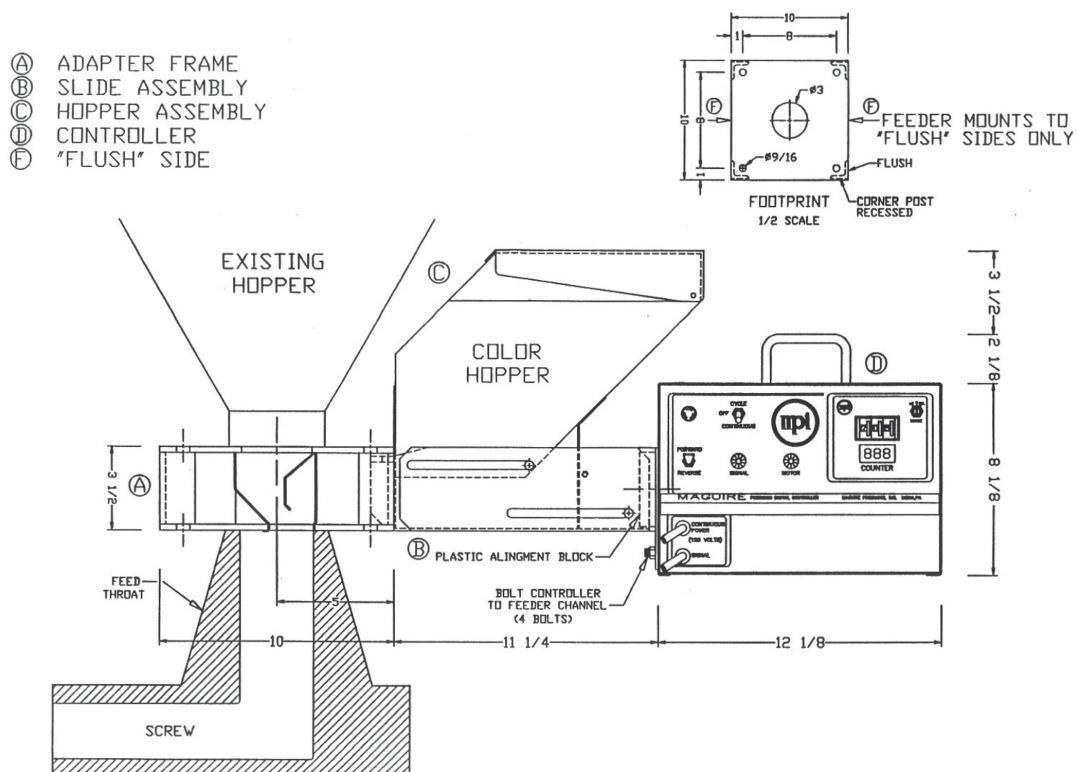
It is only necessary to calibrate a given material one time. Once the machine is calibrated for a particular grade of material and the proper setting is calculated, the metering rate for that material is determined. For future reference the user should make note of the setting and use it when that material is run again. It is not necessary to recalibrate.

Plus

- › Low profile throat adapter frame with additive baffle, visible through acrylic panels
- › Mounting block with pre-drilled 8.0” square bolt pattern
- › Pellet shutoff prevents pellets from spilling when hopper is removed
- › 115/1/60Hz operation
- › 5 -Year warranty

Specifications:

Model	Auger Size	Motor RPM	Continuous Output lb/hr (Kg/hr)	
		Maximum	Minimum	Maximum
MCF-4-18	1/2" (12mm)	30	.05 (0.02)	4 (1.8)
MCF-4-34	1/2" (12mm)	55	0.1 (0.05)	7 (3.2)
MCF-8-34	1" (25mm)	55	0.7 (0.32)	58 (26)
MCF-16-50	2" (50mm)	90	8.0 (3.6)	600 (272)



Accessories:

Extrusion following:

Extrusion Following:
(Show as separate line item on order – shipped separately)
See Price List # 226

5 to 250 VAC add -EAC to end of main part number

0 to 10 VDC add -EDC to end of main part number

Remote control: Add -R as last characters to end of part number with other chosen accessories, if applicable

Extrusion following option

A calibration pot allows each preprocessor to be exactly tuned for your particular extruder.

Calibration is required only once. For correct operation, you simply need to set the digital counter for the proper controller metering rate at FULL extruder speed. Anything less than full speed will automatically be reflected in a corresponding reduced metering rate. Voltages from 1 to 500 volts can be tracked. Accuracy is held over the full range.