



MCS(C) Series Central Conveying Controls

The MCS(C) Control Series provides full featured conveying control in a fixed I/O package.

The MCS(C) Fixed I/O controllers are Allen Bradley PLC based touch screen central loading controls, featuring intuitive operation in a compact package. All receivers, pumps and purge valves connect to a single enclosure via discrete wiring.

— 5 —
YEAR
warranty



MCS(C) Series controls are available with 6" or 7" color touch screens

Central PLC-Based Control

Includes touch screen control of loaders, pumps and purge valves.

Intuitive Operation

Simplified graphics require no special user training.

Two Touch Screens Available

Choose a diagonally-measured 6" or 7" color touch screen with vivid, color-coded, icons that show system functions

Ethernet Communication

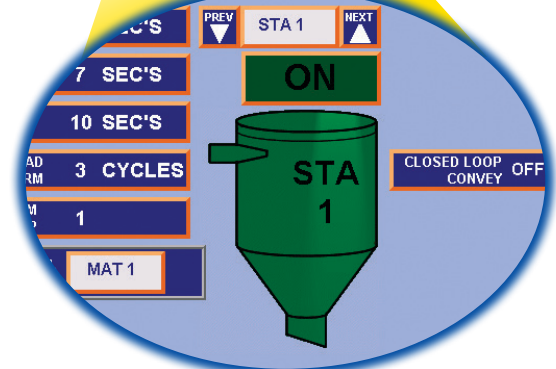
7" Color touch screen controls are equipped with Ethernet communications and screen reflection capability to readily network to PC(s) anywhere.

Proportioning or Blowback

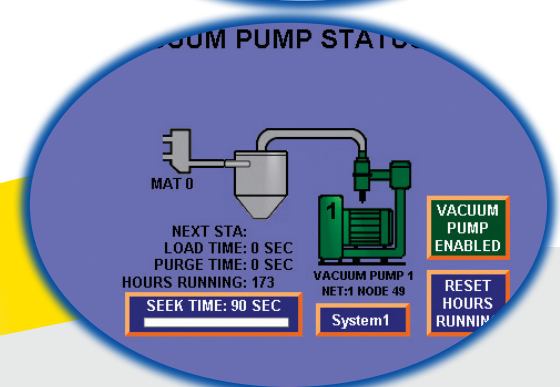
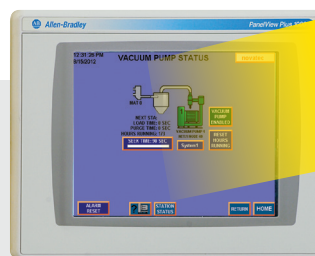
Either proportioning or blowback can be added as an option. (See back page).



Station Setup
4" Screen



Vacuum Pump Setup
7" Screen



Plus

- › 24 VDC inputs and outputs
- › 115/1/50-60 Volt standard (230 VAC optional)
- › Audible and visual alarms on the control face
- › 5-Year warranty

Specifications:

Model	Touch Screen Control	Number of Pumps	Number of Receivers	Number of Purge Valves	Control Box Dimensions
MCS(C)-210-6-6C	6" Color	2	up to 10	6	18"x18"x8"
MCS(C)-210-6-7C	7" Color*				
MCS(C)-320-8-6C	6" Color	3	up to 20	8	30"x24"x8"
MCS(C)-320-8-7C	7" Color*				
MCS(C)-334-10-6C	6" Color	3	up to 34	10	30"x24"x8"
MCS(C)-334-10-7C	7" Color*				

* Includes Ethernet communications with remote screen reflection capability via web browser or VNC app.

Options:

Outputs for receivers: Either blowback or proportioning is available as an option - For up to 10, 20 or 32 receivers

(1 Optional output per receiver - Not configurable optional outputs either all proportioning or all blowback)

Input power: 230/1/50/60 (in lieu of 115 VAC standard)

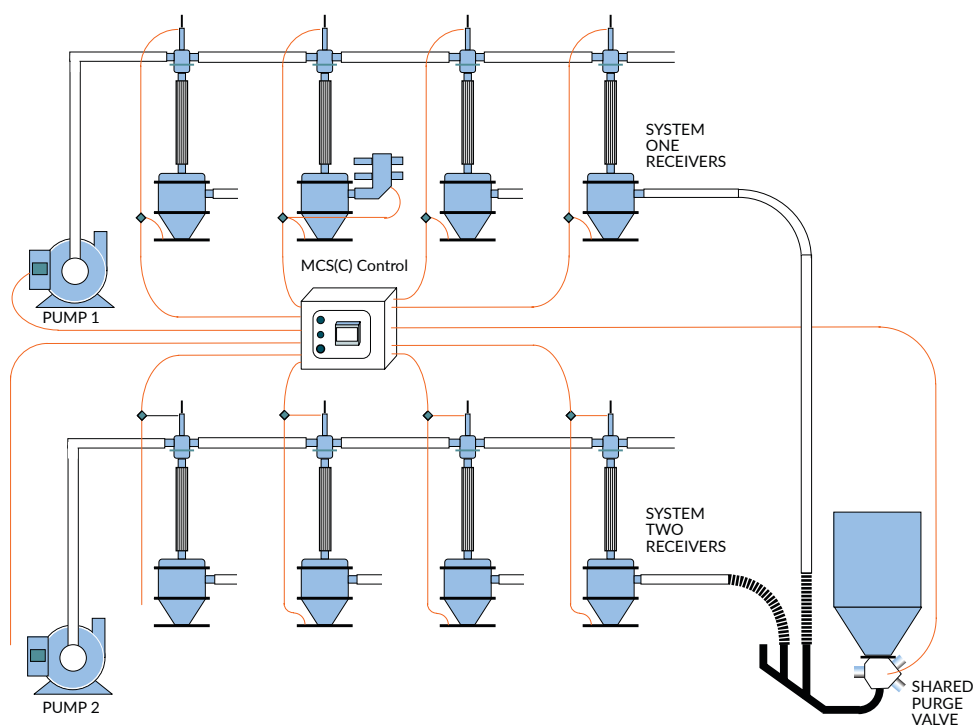
Alarm strobe: (must match panel I/O voltage)

115 VAC or 24 VDC

115V I/O for existing systems:

(Must be factory installed)

For all models.



Typical MCS(C) Series Central I/O System Layout