



Machine Hopper Assemblies

These Multi-Purpose Hoppers Can be Mounted on Feeder Machine Adapters or Directly on Machine Throats

Material is fed into the hopper using a vacuum loader or vacuum receiver. Various feeders can be mounted below the hopper to introduce regrind, color or other additives into the material stream at the point where it enters the processing machine.



MHA-08

MHA-19

MHA-38

Clear View of Material Level

Each hopper has 2 to 5 sight glasses so material level can be easily seen.

Loader-Ready Lid

Vacuum loader or receiver can be mounted without drilling any holes.

Clean-Out Door

A thick clear clean-out door is provided on the 19 and 38 pound sizes.

Feed Throat Adapter

A 2" to 6" flange adapter is available for mounting to the process machine. A standard 10" flange mounts directly to "M"-series feeders.

Discharge Slide Gate

Stops virgin material from flowing during a color change.

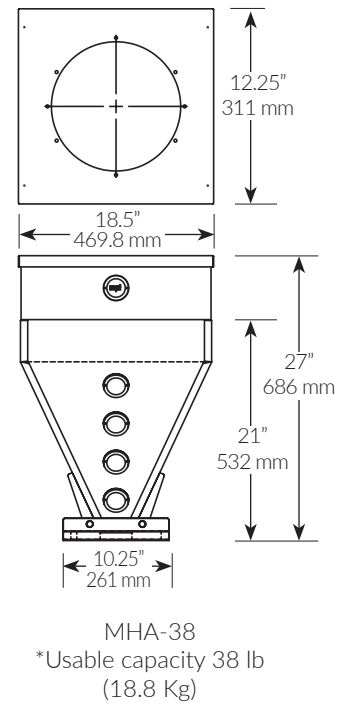
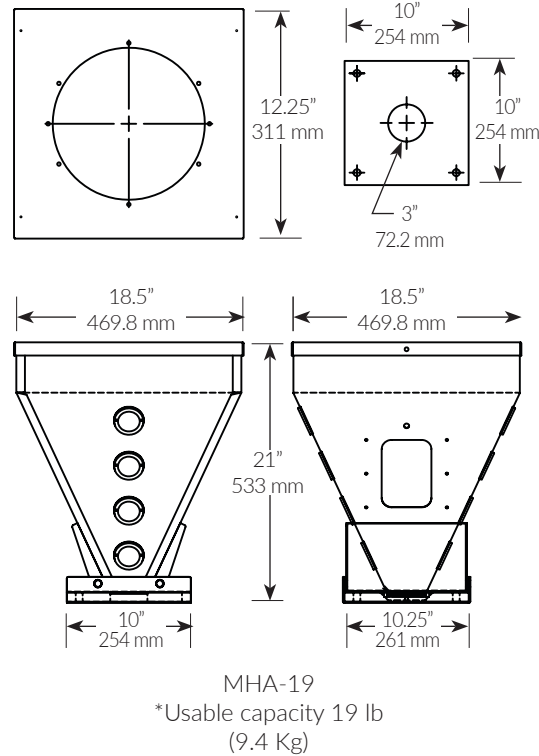
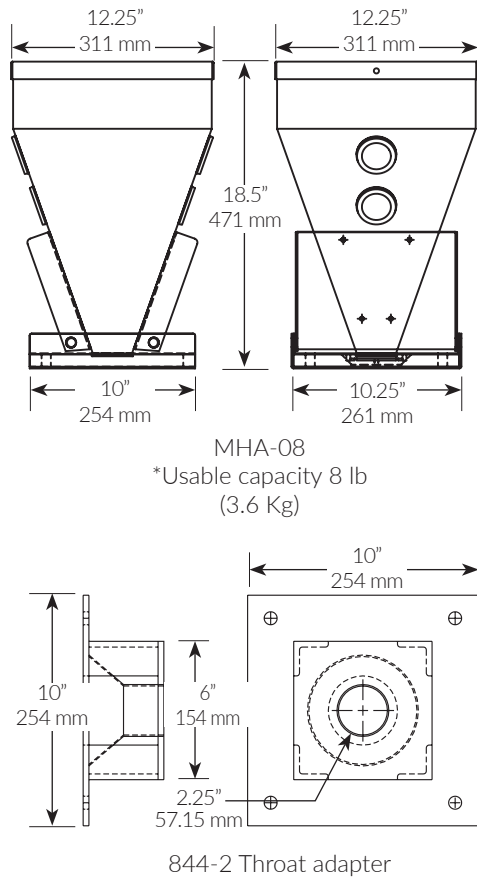
Removal of Non-Ferrous Metals

Either a drawer magnet or hopper magnet may be used for this purpose.

Plus

- › Durable powder-coated finish inside and out.
- › Optional drain port and remote sensor-mounting well can be installed in place of existing sight glasses.
- › 5-Year warranty

Specifications:



*Usable capacity with Loader or Receiver mounted on top of hopper.

NOTE: A manual slide gate is included with the machine hopper assembly. It creates a 3" diameter discharge opening to the throat adapter.

Options:

- › Drain port
- › Mounting bracket for level sensor

Accessories:

- › Throat adapter for receiver/loader
- › Machine hopper application
- *Loader pattern lids (no charge)

* MHA-08 and -19 accommodate receivers and loaders with 2 & 3" dump throats. MHA-38 accommodates 5" dump throats.

**Available Feeders:

- › MGF Gravimetric Feeder
- › MCF Color Feeder
- › MRF Regrind Feeder
- › MPF Powder Feeder

** Contact Factory for pricing



844-2 Throat adapter



MHA-19 with VRH-19
plus feeder and control



MHA-38 with VRH-38 and
844-2 throat adapter