



# NPC-STD Series Puller/Cutters

Servo puller/cutters with standard features that are optional on other brands, providing superior product consistency.

Bessemer NPC-STD Series Puller/Cutters control line speed via precision, servo drive belt traction assemblies and manually adjustable compression force setting to ensure consistent pulling traction. Multi-V drive pulleys provide excellent product tracking capabilities feeding to a 2", 3" or 4" rotary knife cutter on the same base.

— 5 —  
**YEAR**  
warranty



7" high resolution  
color touch screen



NPC-STD

Shown with optional  
extended inlet guard

## Common Features for Puller/Cutter

### Siemens Color Touch Screen PLC Control With Connectivity

- Recipe management for consistent and repeatable setups
- Line rate display
- Totalizing counter
- Programmable puller speed  
Speed input touch control via coarse and fine buttons as well as numerical display
- Password protection
- Data logging
- Single or separate controls

## Puller Overview

### Servo Motor Drive

Provides extended speed range and high-level speed accuracy.

### Multi-V Drive Pulleys and Traction Belts

60 Durometer Multi-V traction belts are standard. Multiple belt durometers and materials are available.

### Helical Bevel Gear Reducer

With 90% operating efficiency for reduced energy and heat plus 60% more torque than a typical worm gear reducer.

### Multi-Product Use

Wide range of compression force and speeds for pipe, profile and tubing.

### Drive Belt

Dual-sided serpentine.

## Rotary Knife Cutter Overview

### Multiple Cutting Modes

On Demand with encoder, optical sensor or timer as well as continuous cut mode.

### Scrap Cut Technology

Preset scrap length and simply press the touch screen to switch between scrap and production without losing part counts.

### Blade Lubricant Reservoir

Easily filled with lubricant.

### Blade Holder

Accommodates a variety of blade types which are easy to replace.

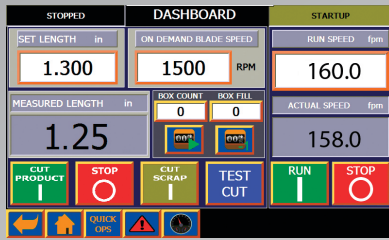
### Integrated Safety Interlock

For Cat4/SIL3/PLe.

## Plus

- › Lowest cost of ownership with the industry's only 5-year warranty

# Value Is Redefined with our STANDARD FEATURES



## Industrial strength Siemens PLC touch screen control, standard

Built-in Features include:

- Process monitoring
- Digital line rate indication
- Recipe management
- Coarse and Fine puller speed adjustment
- Standard data logging
- Standard totalizing control
- Ethernet ready

— 5 —  
**YEAR**  
warranty

1 or 2 Axis adjustable positioning of cutter head depending on model

Lubricant reservoir



Easily changed blades pass through blade wiper and lubricant reservoir

Manually adjustable compression force setting on center line

See-through, fully enclosed belt guard

Optional extended inlet guard shown

Product guides and tension adjustment



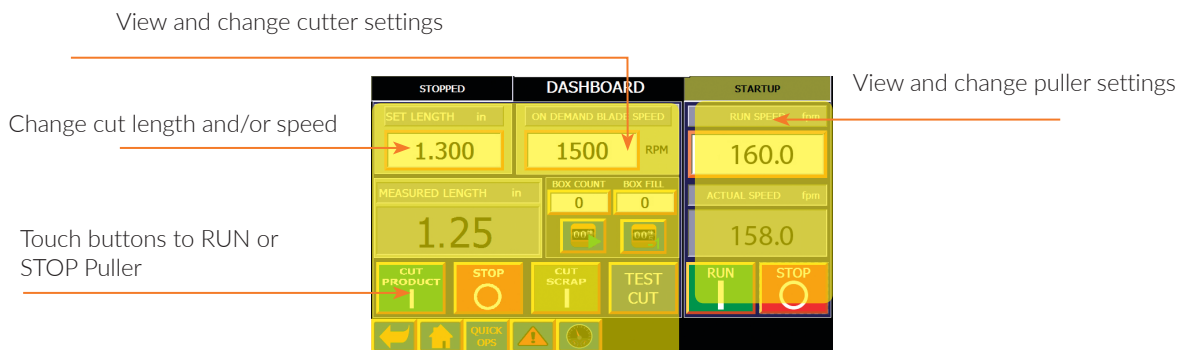
Dual-sided serpentine drive belt

# Siemens Color Touch Screen PLC Control Equals **Convenience and Reliability for the NPC**

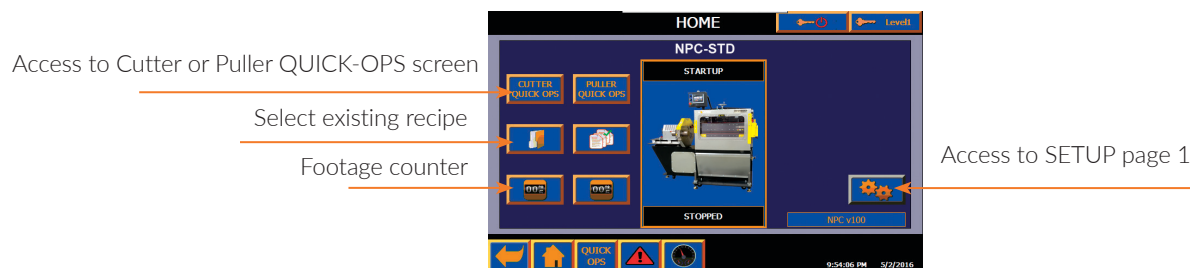
You choose...easily enter basic puller/cutter settings and run product  
...or use full control capabilities with up to 30 recipes, box count, box fill and more.

## **DASHBOARD** – View real-time performance of cutter and puller

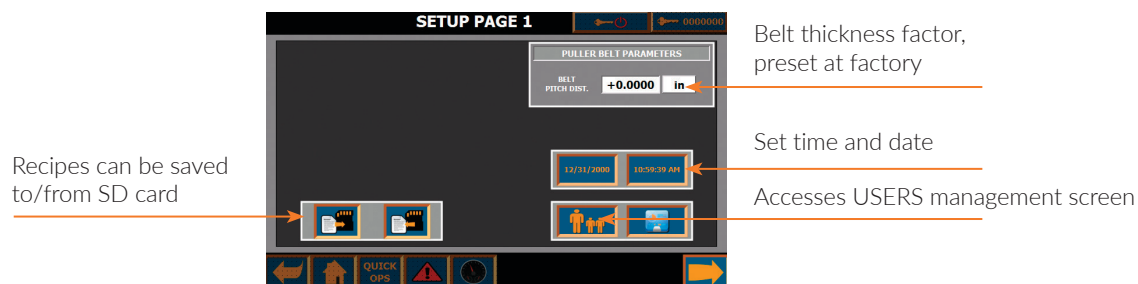
### **QUICK-OPS SCREEN** – View real-time performance of puller



### **HOME SCREEN** – Access to SETUP screens



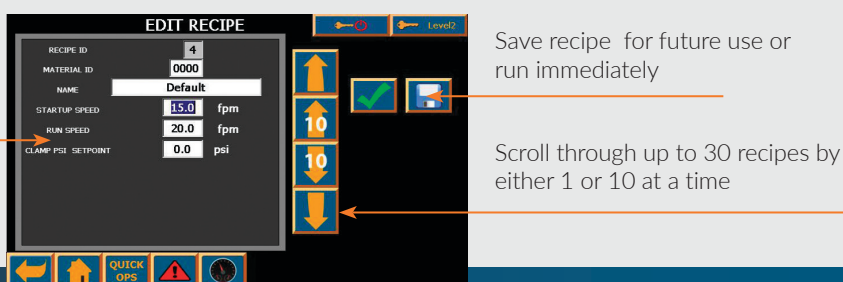
### **SETUP SCREEN** – Align puller functions with your system configuration



### **RECIPE EDIT SCREEN** – Recipes can be entered or edited

Touch each box and enter values on the pop-up alpha-numeric screen:

Recipe ID  
Material ID  
Recipe name  
Startup speed  
Run speed

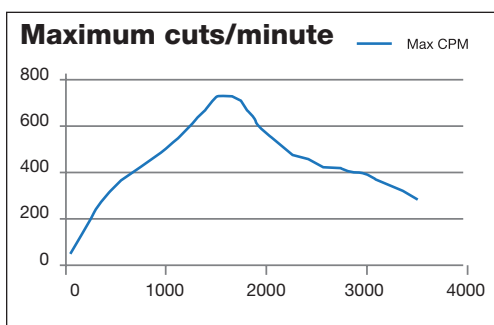


## Specifications:

Model Number	NPC-STD-4X30-C2	NPC-STD-4X30-C3	NPC-STD-4X30-C4
	NPC-STD-6X30-C2	NPC-STD-6X30-C3	NPC-STD-6X30-C4
Gear Ratio	7.5:1	7.5:1	7.5:1
*Speed Range FPM (Ft/Min)	7 - 325		
Power - Hp	2.46	2.46	2.46
Approximate Pull Force - lb	138 lb		

\* See options below Standard voltage 460V/3ph/60Hz

C Series Cutters	*2"	*3"	*4"
Bushing diameter	2.25	3.25	4.25
Maximum profile	2	3	4
Power - Hp	5	5	11.8
Max continuous cuts 1 blade (2 blades)	800 CPM (1600 CPM)	800 CPM (1600 CPM)	750 CPM (1500 CPM)
Maximum on-demand cuts (1 blade)	300 CPM @ 600 RPM	300 CPM @ 600 RPM	200 CPM @ 600 RPM
Maximum on-demand blade (RPM)	1000	1000	900
Maximum peak torque (in/lbs)	1130	1130	3720
Blade mount arm	6.5"		



## Options:

Alternate belt materials/durometers available

Remote touch-screen control at extruder

Left-to-right operation

Belt gap indicator

Alternate gear box ratios

230 VAC

Extended guard tunnel

Note: Some additional options are available - contact factory.

Gear Ratio Options	Ratio	Speed range	Hp	Pull force
NPS-STD-Gear-10	10:1	4.0 -325 ft/min	3	222 lb
NPS-STD-Gear-15	15:1	2.7-220 ft/min	3	334 lb
NPS-STD-Gear-20	20:1	2-165 ft/min	3	445 lb
NPS-STD-Gear-30	30:1	1.4-110 ft/min	3	580 lb

**Dimensions:** (inches) NPC-STD-4x30

(add 4" to width for NPC-STD-6x30)

