

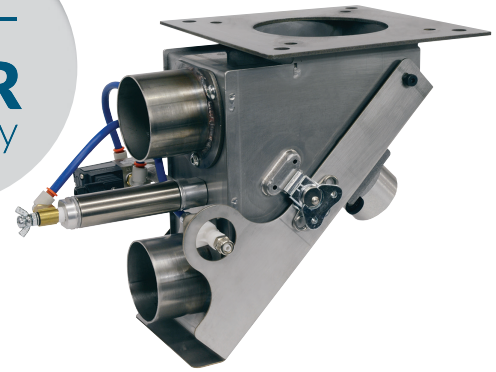


# Vacuum Purge Take-Off

Combination take-off box/purge valve allows conveying followed by line clearing with ambient or dry air.

Mounted below a drying hopper or other material storage vessel, the valve's upper chamber is gravity filled with resin. When conveying begins, the pneumatic valve dispenses material into the conveying line. The valve closes during conveying, allowing the remainder of vacuum-on time to clean the conveying line with ambient or dry air.

— 5 —  
**YEAR**  
warranty



## Stainless Steel Construction

For years of trouble-free service

## Dual Mounting Plate

Allows installation on a 4.75" or a 6" (12 or 15.2 cm) bolt pattern

## Tool-free, Safe Draining and Cleanout

Through a hinged drain chute with safety-interlock

## Adjustable-Stroke Purge Valve Cylinder

For optimizing operation with any material or system setup

## Fixed Conveying Air Supply Port

Simplifies dry air supply line installation

## Internal Screen On Conveying Air Inlet

To prevent pellet dribble or ingestion of contaminants during vacuum. Optional filter screen for ambient convey and purge



Slide gate for draining material.



Hinged door opens for easy, complete clean-out when changing resin.

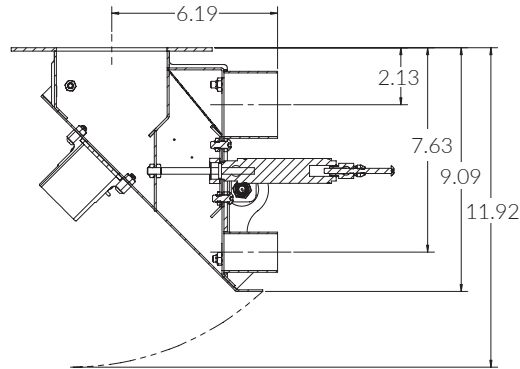
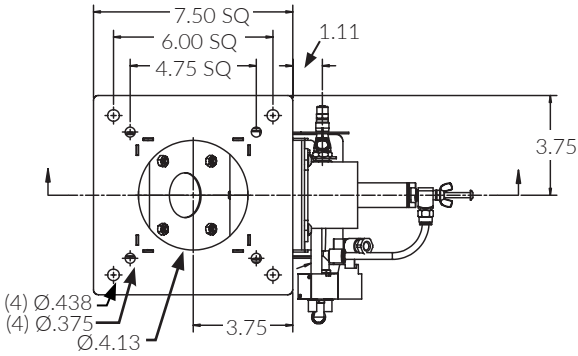
## Plus

- › 24 VDC or 115 VAC operation
- › 5-Year warranty

**Specifications:**

Part Number	A (Flange to discharge center line)	
	in	mm
VPT-15	1.5	40
VPT-20	2.0	50
VPT-25	2.5	65

Standard operating voltage:  
24 VDC Add-11 for 115 VAC voltage



**Options:**

**DeviceNet Cable(s):**

in lieu of standard cable(s) 24VDC

**Screen Inlet Filter for Ambient Air Purge**

**Polyester Inlet Filter for Ambient Air Purge**

**Accessories:**

**Hopper to VPT Adapters:** (For all models)

- 8" (20.3cm) sq. bolt pattern
- 9.75" (24.8cm) sq. bolt pattern
- 14" (35.6cm) sq. bolt pattern

**How it VPT Works:**

