



# Modular Surge Bins

Exclusive, expandable Novatec design offers new advantages to processors.

MSB series surge bins provide expandable material storage space and can be integrated into a central conveying system.



› **Easily Expanded to Increase Volume**

Modular extensions, either 12 or 24 inch-high, can be added to an MSB-30 surge bin to increase volume by 20 or 40 ft<sup>3</sup>.

› **Cost Effective**

MSB surge bins are the best material storage value on the market.

› **Fast Shipment**

Can be shipped in 1 to 2 weeks.

› **60° Cone Bottom is Standard**

To accommodate pellets and many regrinds.

› **Rugged Construction**

Carbon steel with powder coat painted finish inside and outside.

› **Ready for Loading**

Accommodates a loader or receiver up to 5 ft<sup>3</sup> capacity. (Adapter plate may be required for specific bolt hole patterns.)

› **Sized by Usable Volume**

Size based on volume of material that can be loaded practically – not air capacity.

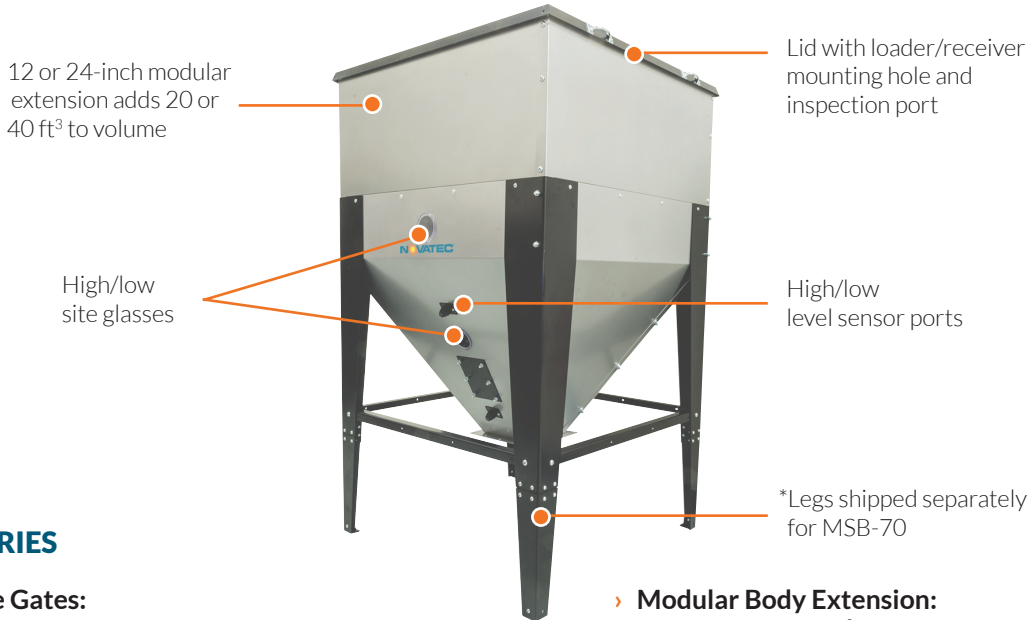
## Plus

- › Hi/low 4-inch diameter sight glasses
- › Hi/low 1.25-inch NPT couplings for level sensing
- › 12 x 12-inch discharge opening
- › 20-inch discharge clearance
- › 12 x 9-inch inspection hatch
- › 12-inch diameter hole to mount loader
- › Lowest cost of ownership with the industry's only 5-year warranty

## SPECIFICATIONS

Model Standard 60°	Volume		L x W x H	
	ft <sup>3</sup>	Liters	in	cm
<b>MSB-20</b>	20	566	44 x 44 x 70	112 x 112 x 178
<b>MSB-30</b>	30	850	54 x 54 x 70	137 x 137 x 178
<b>MSB-50</b>	50	1415	54 x 54 x 82	137 x 137 x 208
<b>MSB-70</b>	70*	1980	54 x 54 x 94	137 x 137 x 240

\*MSB-70: 21-inch legs are shipped separately with installation hardware to avoid extra freight charges due to height.



## ACCESSORIES

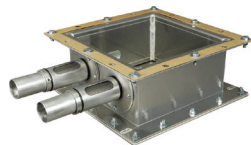
### Discharge Gates:

- 12-inch (305 mm) manual carbon steel slide gate
- 12-inch (305 mm) manual stainless steel slide gate
- 12-inch (305 mm) carbon steel rack and pinion slide gate with stainless steel contact points
- 12-inch (305 mm) Stainless steel rack and pinion slide gate with all stainless steel components

### Aluminum Take-off Boxes:

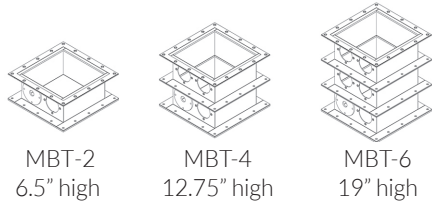
For 1.5 to 4 inch take-off probes:

- Single or two position
- Four position
- Six position



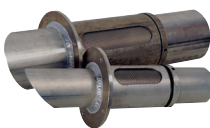
MBT-2

Standard MBT hold 1.5 to 3 inch probes. For 4 inch (only) compatible take-off box, add "-4" to end of MBT part number.



### Aluminum Take-off Box Probes:

- 1.5 in. (38 mm)
- 2.0 in. (50 mm)
- 2.5 in. (64 mm)
- 3.0 in. (76 mm)
- 4.0 in. (104 mm)



Material probes with adjustable air flow, 1.5 to 4 in. OD

### Modular Body Extension:

- 12-inch high (20 ft<sup>3</sup>) for MSB-30
- 24-inch high (40 ft<sup>3</sup>) for MSB-30

### Leg Extensions:

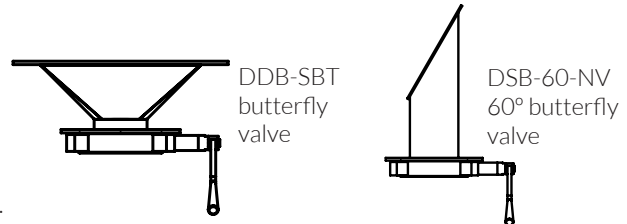
- For 12, 40, 60 or 72 inches of additional clearance (Welded, one piece construction. Bolted to MSB at destination)

### Drain with 4-inch Butterfly Valve Shut-off:

- Surge bin cone mount discharge tube

### Discharge Tube Extension: 20 or 32 inch

### Take-off Box Mount: Cone transition



### Aluminum In-line Air Adjustment Probes:

- 1.5 to 3 inch (Increases air-to-material ratio; recommended for long distance, high vacuum conveying).

### Alarm Horn and Light Kits: Multiple versions