



VRX Vacuum Receivers: Hinged Lid with Integrated Fill Valve

VRX Series Receivers provide transfer of plastic pellets and regrind using centralized vacuum pumps and controls. They offer a wide range of important advantages that improve performance and ease of use over typical vacuum receivers.

Standard models are constructed for flange mounting to existing bins or hoppers and smaller models will fit directly onto machine mount glasses for easy retrofit. An external fill valve (EFV) provides vacuum for each receiver and can be mounted on the receiver lid or externally in the vacuum line.

› **Hinged Lid with Adjustable Mount**
Quick, hands-free access to the filter. Easily reconfigure inlet-to-hinge orientation.

› **Integrated External Fill Valve with Bolt-On Tube Stub**
Allows units to be adapted to larger vacuum lines.

› **Stainless Steel Construction**
Rugged 14 gauge SS body section provides a wear resistant, non-ferrous material contact surface.

› **Tangential Material Inlet**
Provides cyclonic air/material separation which minimizes material degradation.

› **3-Inch Discharge on 12, 19, and 30 lb Models**
Provides faster and more complete discharge of materials - especially regrind.

› **Material Inlet Deflector Check Valve**
Neoprene gasket provides positive seal. No external material line valve needed!

› **Externally Mounted Mechanical Demand Switch**
Proven reliability with years of use on Novatec GSL receivers.

› **Local On/Off Switch and LED**
Convenient pause for material change, and visual indicators for receiver demand and fill cycle.

› **Dump Valve with Integrated Level Switch**
Included on standard, blowback and filterless models. Dump valve protected from damage by protective shroud with less protrusion into hoppers/bins.

› **More Reliable Gasket Seal Design**
Established through extensive testing with pellets and dusty regrind.

› **Terminal Box with Plug & Cable**
6-pin quick release plug with 12-foot cable.



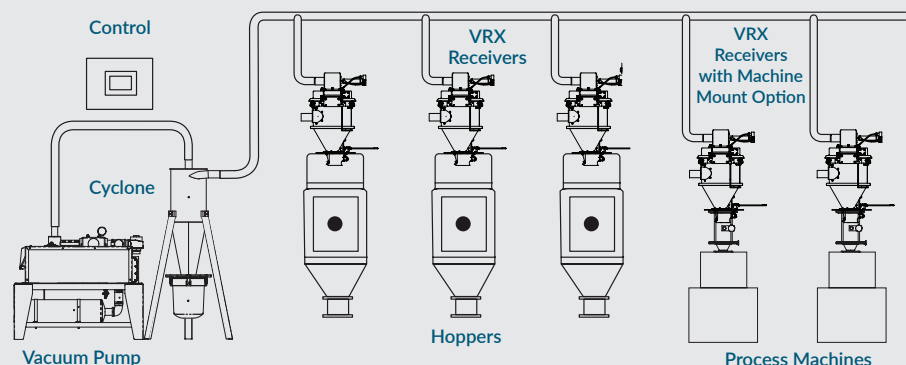
VRX-12



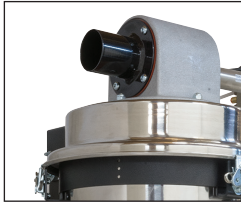
Low-profile shrouded discharge

PLUS

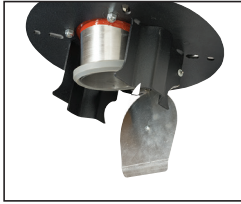
- › Reinforced 20-mesh stainless steel pellet screen
- › Inlet/outlet diameters of 1.5-inch to 4-inch (3.8-10 cm)
- › 24 VDC or 115 VAC control voltage
- › 5-year warranty for lowest cost of ownership



Many popular features not found on other receivers



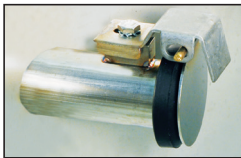
Bolt-on, integral, lid-mounted external fill valve (EFV) for vacuum sequencing is standard for vacuum lines up to 3" OD. Can be mounted externally if desired.



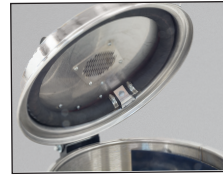
Custom-molded neoprene gasket on full-flow dump throat assures tight seal and no loss of vacuum. Unique design keeps resin from contacting gasket surface. Low profile shroud provides less intrusion into hopper/bin and flapper protection.



Expanded aluminum supports 20-mesh stainless steel fines filter screen.



Tangential inlet provides cyclonic flow minimizing material degradation. Internal flapper with neoprene seal allows common line system use.



Powerful blowback accessory.



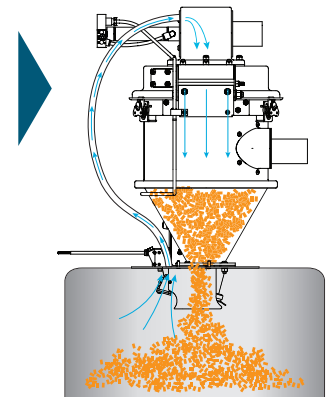
All VRX models available as filterless for specific line sizes.



VRX-12 with 8 lb. machine-mount glass hopper and integrated flapper demand switch (photo-eyes optional). Standard VRX with 3-inch discharge converts easily to machine-mount model.

Closed loop vent kit

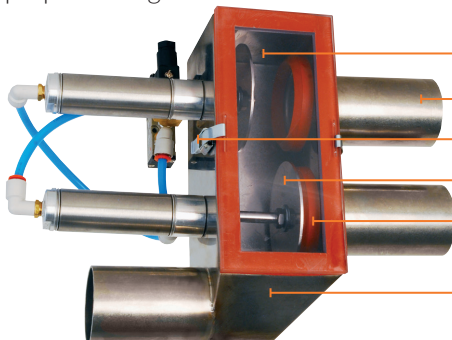
Uses air from the hopper to vent the chamber during discharge while keeping ambient air out.



Optional External Proportioning Valve

External proportioning valve provides proportioning/ layering of materials when used with VRX receivers. Optional mini-PLC control may be programmed for proportioning.

Shipped with a coupler. Choose 24 VDC or 120 VAC. See separate data sheet.

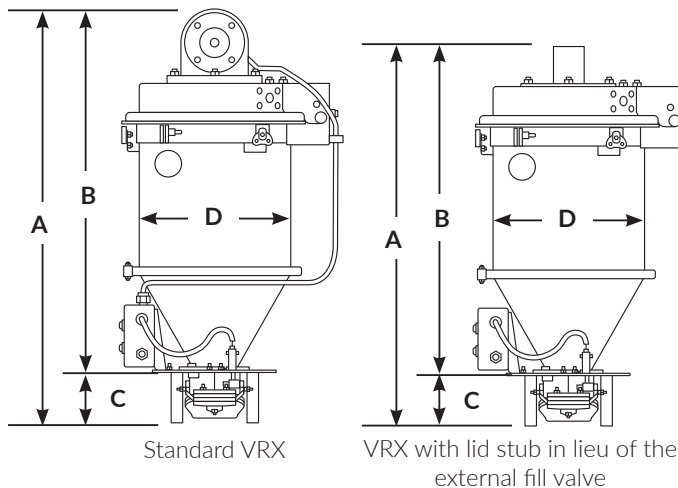


- Polycarbonate access window
- Inlet/outlet diameter 1.5-inch to 4.0-inch
- Quick-release latches
- Stainless steel disc/seat
- Molded V-tip ring gaskets are flange mounted - out of the material flow
- Stainless steel body with unique design creates turbulent flow to clear material

DIMENSIONS AND WEIGHTS

Hopper Loading Packages											
Configuration	Part Number	A		B		C		D		Approx. Shipping Weight	
		in	cm	in	cm	in	cm	in	cm	lb	kg
Standard	VRX-12	23.4	59.5	20.1	51.1	3.3	8.4	10.0	25.4	25	11
	VRX-19	27.4	69.7	24.1	61.3	3.3	8.4	10.0	25.4	29	13
	VRX-30	33.8	85.9	30.5	77.5	3.3	8.4	10.0	25.4	40	18
	VRX-38	31.1	79.1	27.8	70.7	3.5	8.8	16.0	40.6	45	20
	VRX-76	41.1	104.5	37.8	96.1	3.5	8.8	16.0	40.6	55	25
	VRX-114T	51.5	130.8	48.2	122.4	3.5	8.8	16.0	40.6	65	29
Option: Tube Stub in lieu of EFV	VRX-12	21.3	54.0	18.0	45.6	3.3	8.4	10.0	25.4	25	11
	VRX-19	25.3	64.2	22.0	55.8	3.3	8.4	10.0	25.4	29	13
	VRX-30	31.6	80.4	28.3	72.0	3.3	8.4	10.0	25.4	40	18
	VRX-38	29.0	73.6	25.7	65.2	3.5	8.8	16.0	40.6	45	20
	VRX-76	39.0	99.0	35.7	90.6	3.5	8.8	16.0	40.6	55	25
	VRX-114T	49.3	125.3	46.0	116.9	3.5	8.8	16.0	40.6	65	29

Filterless units, VRX-12 through -30: Add 7" to dimension "A"
 Filterless units, VRX-38 through -114T: Add 9" to dimension "A"



Mounting Patterns

VRX-12 through VRX-30
 (3" discharge assembly)



4 each 0.39"/ 9.9 mm dia.
 holes equally spaced on a
 6.88"/174.8 mm dia. B.C.

VRX-38 through VRX-114T
 (5" discharge assembly)

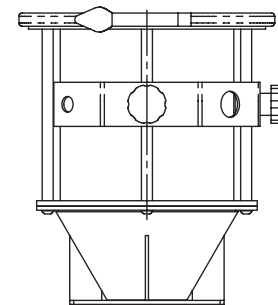


6 each 0.31"/ 7.9 mm dia.
 holes equally spaced on a
 13"/330.2 mm dia. B.C.

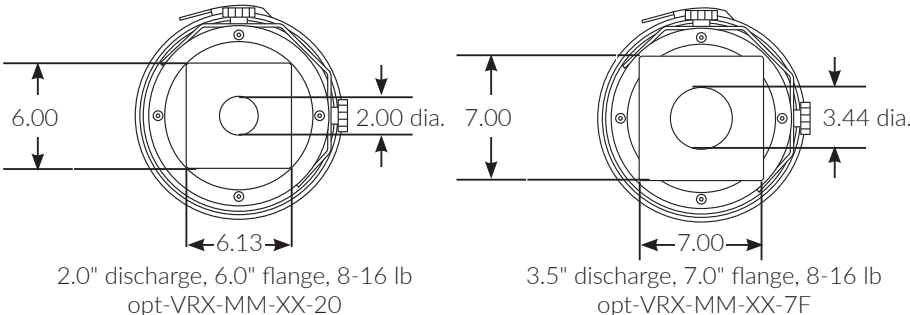
Machine Mount Packages									
Part Number	Height		Capacity		Discharge Diameter		Shipping Weight		
	in	cm	lb	kg	in	cm	lb	kg	
*opt-VRX-MM-8	14.4	36.6	8.0	3.6	2.0	5.1	30	13.6	
*opt-VRX-MM-8-7F	13	33.0	8.0	3.6	3.5	8.9	34	15.5	
*opt-VRX-MM-12	18.4	46.7	12.0	5.5	2.0	5.1	45	20.5	
*opt-VRX-MM-12-7F	17	43.2	12.0	5.5	3.5	8.9	50	22.7	
*opt-VRX-MM-16	21.4	54.4	16.0	7.3	2.0	5.1	60	27.3	
*opt-VRX-MM16-7F	20	50.8	16.0	7.3	3.5	8.9	65	29.5	
**MHA-38	27.0	68.6	38.0	17.3	NA	NA	NA		

* For VRX-12 through VRX-38

** For VRX-76, use machine/surge hopper MHA-38. See MHA data sheet for details.



8-16 lb machine mount package
 shown with bracket that includes
 the optional photo-eye sensor.



Note: Mounting plate blank, bolt-pattern to be specified by customer order or added in the field.



MHA-38

SPECIFICATIONS

Model	Configuration	Available Line Size		Volume		Capacity*	
		in	mm	ft ³ L	L	lb	kg
VRX-12	Standard	1.50 - 2.50	38 - 64	0.33	7.4	12	5.4
	Blowback (Option)						
	Filterless (Option)						
VRX-19	Standard	1.50 - 3.00	38 - 76	0.50	15	19	8.6
	Blowback (Option)						
	Filterless (Option)						
VRX-30	Standard	1.50 - 3.00	38 - 76	0.79	22.4	30	13.6
	Blowback (Option)						
	Filterless (Option)						
VRX-38	Standard	1.50 - 3.00	38 - 76	1.0	31.2	38	17.2
	Blowback (Option)						
	Filterless (Option)						
VRX-76	Standard	1.50 - 4.00**	38 - 100**	2.0	52.4	76	34.5
	Blowback (Option)						
	Filterless (Option)						
VRX-114T	Standard	1.50 - 4.00**	38 - 100**	3.0	74.5	114	51.7
	Blowback (Option)						
	Filterless (Option)						

*Resin capacity based on 38 lb/ft³ bulk density.

**3.50" and 4.00" vacuum line only available as lid tube stub and used with the SV-35 or SV-40 station valves (included). For all models: 24 VDC standard - 120 VAC us a no charge option.

ACCESSORIES

- › **Pulsed Blowback Control**
Mini-PLC control mounts near receiver and generates adjustable blowback signals when the central control is not equipped with the blowback feature.
- › **External Proportioning Valve with Coupler**
Available for all receivers. *(See separate data sheet.)*
- › **Proportioning Valve Control**
Mini-PLC control mounts near receiver and generates adjustable proportioning signals when the central control is not equipped with proportioning capability. Utilizes the receiver's load signal.
- › **Retrofit Glass Hopper Sizes for Existing VRX Units**
Field conversion kit includes base, glass, top adapter plate and discharge cone/valve assembly 8, 12, or 16 lb glass.
- › **Level Switch, Capacitance**
30 mm diameter, 2 m cable - Available for all receivers.



OPTIONS

- › **Must Specify Glass Hopper for Machine Mount Units**
See Machine Mount Packages chart on the previous page.
- › **DeviceNet Cables for All Models**
In lieu of standard cables, 24 VDC only.
- › **Custom Drilling of MM Flange**
Standard base flange is blank for customer drilling.
- › **Extended Wear Package for VRX-12 through VRX-114T Models Include:**
 - Ceramic lined inlet
 - Ceramic coated inlet check valve flapper
 - Ceramic coated body impact plate
 - Stainless steel discharge flapper
- › **Ceramic-lined Inlet Diameters Available for Wear Package**