



High Efficiency Central Drying Assemblies

CDA-HE series central drying assemblies not only provide custom drying for diverse resins, complete with OverDry Protection, but now feature HE Hoppers for unparalleled drying efficiency.

Supplying desiccated air to multiple units, these assemblies offer precise moisture control for various quantities of resin. Each assembly features an HE Hopper, equipped with our High Efficiency Diffuser, a robust and easy-clean design, and a borosilicate sight glass for enhanced visibility. Every CDA-HE is DryerGenie-ready so you can unlock the future of resin drying with an A.I.-powered leap in efficiency.



CDA2-400

Assembled Complete for Easy Installation

Each CDA2 includes a hopper on a stand with 24" clearance, a heater/blower and control package to assure balanced system airflow.

Uniformly Sized Stand Assemblies

8" Process and return headers and 3" dry air purge headers, are at uniform heights, ready to be connected side-by-side with other CDA2 units.

High Efficiency

Engineered for peak performance, our new hopper air diffuser optimizes efficiency and airflow, reducing drying times.

Enhanced Durability & Design

Our HE hoppers feature a robust build and superior hardware for extended durability and reliability.

Well-Equipped Insulated Hoppers

Complete with a slide-gate shut-off, slide-gate drain port, return air pellet screen, large door and sight glass are provided for material level monitoring and easy clean out.

Standard OverDry Protection Built Into Each CDA2

Ensures that moisture sensitive materials, like nylons, are not over dried while providing energy savings as well.

5-Year Warranty

For lowest cost of ownership.

New, Improved Sight Glass

Featuring borosilicate glass, the enhanced viewing window delivers crystal-clear visibility for easy resin monitoring.

Process Temperature up to 350°F (177°C)

Proper drying temperature for any material.

Control From Central Dryer or Locally

Optional central dryer control module kit provides control for up to 16 CDA2 units.

FlexXpand NovaNet option provides control of up to 4 central dryers and 48 CDA2's.

(See central drying and FlexXpand / NovaNet data sheets)

Hassle-Free Cleaning

Designed with simplicity in mind, our HE hoppers offer an E-Z cleaning, reducing downtime.

Plus

- › Main line disconnect switch
- › Branch circuit protection
- › Low airflow switch
- › Inlet/outlet dampers
- › Lid bolt hole pattern for Novatec loader or receiver
- › Solid state contactor and mechanical safety on booster blower and heater
- › 5-Year warranty

DryerGenie Ready

Elevate to A.I.-powered, condition-based drying. Experience resin drying at ludicrous speed!

NOVANET
Compatible

NOVATEC

Specifications:

MODEL	Hopper size				Dimensions						**HB2 MODEL
	*By weight		By volume		W		D		H		
	lb	Kg	ft³	Liters	in	cm	in	cm	in	cm	
CDA2-60	60	27	1.5	42.5	40	100	49	125	78	198	HB2-15
CDA2-100	100	45	2.5	70.8	40	100	49	125	78	198	HB2-15
CDA2-150	150	68	3.9	110	40	100	49	125	84	213	HB2-40
CDA2-200	200	90	5	142	50	127	49	125	78	198	HB2-40
CDA2-300	300	68	7.9	224	50	127	50	120	85	216	HB2-60
CDA2-400	400	180	10	284	50	127	49	125	92	234	HB2-60
CDA2-600	600	270	15	425	60	152	49	125	98	249	HB2-100
CDA2-800	800	360	20	567	60	152	49	125	106	269	HB2-150
CDAB-1000	1000	450	25	709	60	152	49	125	109	277	HB2-150
CDA2-1500	1500	680	39.5	1082	68	172	65	165	129	328	HB2-250
CDA2-2000	2000	900	52.6	1490	76	193	65	165	134	340	HB2-300
CDA2-2500	2500	1140	65.8	1863	78	198	67	170	149	379	HB2-400
CDA2-3000	3000	1361	79	2237	96	244	69	175	154	391	HB2-600

*Based on polycarbonate pellets @ 38 lb/ft³

**Standard voltage: 460/3/60

Note: 60 through 150 lb hoppers are stainless steel; all others are carbon steel.

Accessories:

Manifold end loop kit:

(Includes U-duct with damper and couplers)

Options:

Dew point indication

MoistureManager™ dewpoint control:

Add-MM after model number

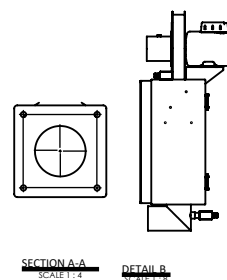
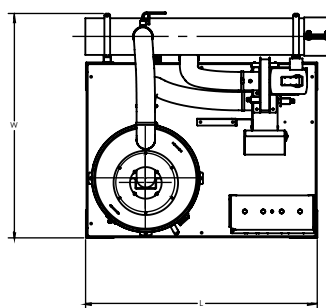
Control from central dryer:

Provides gateway Control of up to 16 CDA2 hoppers from central drying control

Voltage options in lieu of 460/3/60:

(Show as separate line item on order).

415/3/50 VAC (no charge) 575/3/60 VAC (See price list #121)



SECTION A-A
SCALE 1:4

DETAIL B
SCALE 1:8

