



# High Efficiency Drying Hoppers

Novatec's High Efficiency (HE) insulated drying hoppers have been redefined for unparalleled dehumidification of plastic resins.

Engineered with a cutting-edge hopper air diffuser, the HE series provides enhanced efficiency and airflow to expedite drying times. The new, robust design is not only built tougher, but easier to clean. Equipped with a slide-gate shut-off and a drain, along with a revamped borosilicate sight glass for improved clarity. Unlock the future of resin drying! HE Hoppers are DryerGenie-ready and can be upgraded to feature AI-powered condition-based drying.

## Stainless Steel Construction

On all hoppers through 150 lb (68 Kg) capacity - carbon steel on larger sizes.

## Insulation

Every NOVATEC hopper is supplied with insulation sandwiched between our double-wall construction.

## High Efficiency Hopper

Engineered for peak performance, our new high efficiency hopper air diffuser optimizes efficiency and airflow, reducing drying times.

## Enhanced Durability & Design

Our HE hoppers feature a robust build and superior hardware for extended durability and reliability.

## New, Improved Sight Glass

Featuring borosilicate glass, the enhanced viewing window delivers crystal-clear visibility for easy resin monitoring.

## Large Access Door

Access door (except for NPH-15) allows for easy hopper cleanout and includes one or more round borosilicate sight glasses.

## Hassle-Free Cleaning

Designed with simplicity in mind, our HE hoppers offer an E-Z cleaning, reducing downtime.

## Lid Hole/Bolt Pattern

Included for easy mounting of the appropriate NOVATEC loader or receiver.

\* PGH Power-Guard Hoppers (-600 and up) include a "Return Air" temperature and dew point sensor.



HE Hopper  
1000



## Slide-gate Shutoff and Drain

Slide-gate shutoff on all hoppers; slide-gate drain on 60 through 1000 lb (450 Kg). Discharge drain with cap on larger sizes.

## Return Air Pellet Screen

Ensures that resin does not become trapped in the return air line.

## 5-Year Warranty

For lowest cost of ownership.

### Plus

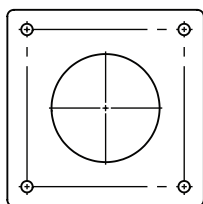
- › 2 each 12' (3.6 m) sections of silicone hose with clamps
- › Note: For the -8000 and up, Novatec recommends hard ducting from the dryer to the hopper air inlet and outlet when the distance between them exceeds 6 feet. The hard duct is not included with the hopper
- › Lifting lugs on all hoppers except for the NPH-15 and -30
- › Air adapters (hopper to dryer) on NPH-200 and up
- › (No charge accessory)
- › 5-year warranty

## DryerGenie Ready

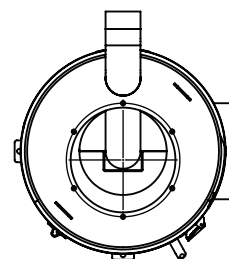
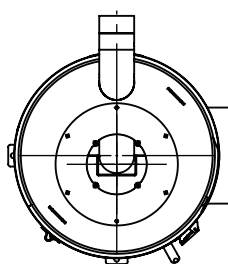
Elevate to A.I.-powered, condition-based drying. Experience resin drying at ludicrous speed!

## Specifications

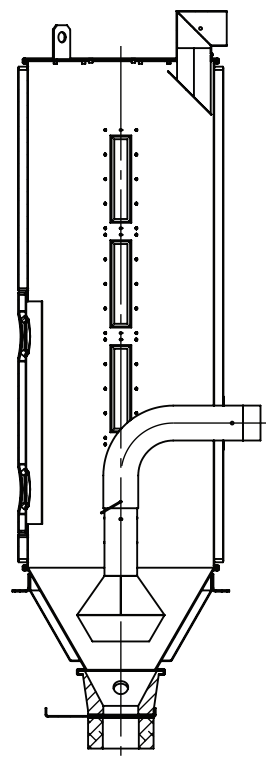
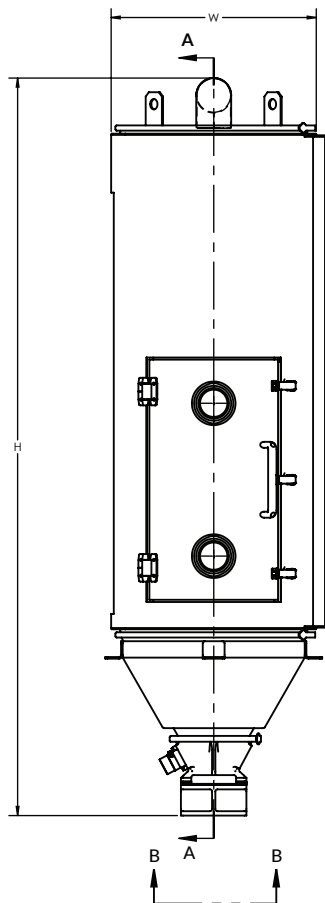
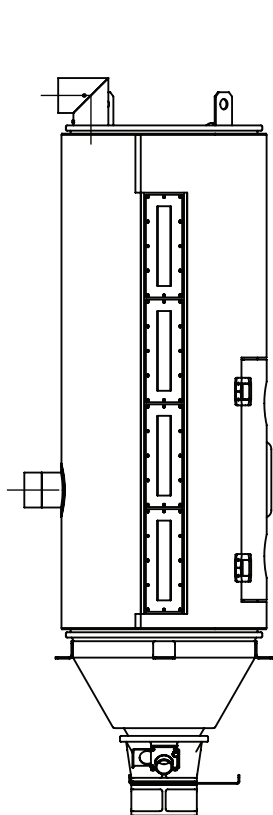
MODEL	Hopper Size				Dimensions						Hopper Weight (Empty)	
	By Weight		By Volume		W		Height		Height with outlet			
	lb	kg	ft³	liters	in	cm	in	cm	in	cm	lb	kg
NPH-60-HE	60	27.3	1.6	44.7	14.1	36	44.5	113	48.7	124	70	31.8
NPH-100-HE	110	50.0	2.9	81.9	18.1	46	51.0	130	55.0	140	80	36.4
NOH-150-HE	165	75.0	4.3	122.9	18.1	46	61.9	157	65.9	167	90	40.9
NPH-200-HE	220	100.0	5.8	163.8	23.5	60	56.0	142	61.4	156	105	47.7
NPH-300-HE	330	150.0	8.7	245.8	23.5	60	70.0	178	75.5	192	115	52.3
NPH-400-HE	400	181.8	10.5	297.9	23.5	60	79.0	201	84.5	215	125	56.8
NPH-600-HE	600	272.7	15.8	446.8	34.3	87	70.0	178	75.7	192	170	77.3
NPH-800-HE	800	363.6	21.1	595.8	34.3	87	81.0	206	86.7	220	195	88.6
NPH-1000-HE	1000	454.5	26.3	744.7	34.2	87	88.0	224	94.0	239	200	90.9
NPH-1200-HE	1200	545.5	31.6	893.7	40.3	102	87.4	222	95.2	242	325	147.7
NPH-1500-HE	1500	681.8	39.5	1117.1	40.3	102	97.4	247	105.2	267	450	204.5
NPH-2000-HE	2000	909.1	52.6	1489.5	46.3	118	102.4	260	110.2	280	550	250.0
NPH-2500-HE	2500	1136.4	65.8	1861.8	48.3	123	117.0	297	127.2	323	600	272.7
NPH-3000-HE	3000	1363.6	78.9	2234.2	50.3	128	118.0	300	128.8	327	820	372.7



VIEW B-B  
MOUNTING ADAPTER BOLT PATTERN  
SCALE 3:8



HOPPER LID BOLT PATTERN



SECTION A-A

Hopper Part Number	Door Opening W x H		Inlet/Outlet "D"		Discharge			
					Adapter (Square) "E"		Discharge Diameter "F"	
	in x in	cm x cm	in	cm	in	cm	in	cm
HE-60	13 x 14	33 x 36	4	10.2	6	15.2	2.1	5.4
HE-100	14 x 18	36 x 46	4	10.2	6	15.2	2.1	5.4
HE-150	15 x 30	38 x 76	4	10.2	6	15.2	2.1	5.4
HE-200	14 x 14	36 x 36	4	10.2	7.5	19	4.1	10.5
HE-300	14 x 14	36 x 36	4	10.2	7.5	19	4.1	10.5
HE-400	14 x 14	36 x 36	4	10.2	7.5	19	4.1	10.5
HE-600	18 x 18	46 x 46	4	10.2	7.5	19	4.1	10.5
HE-800	18 x 18	46 x 46	4	10.2	7.5	19	4.1	10.5
HE-1000	18 x 18	46 x 46	4	10.2	7.5	19	4.1	10.5
HE-1200	22 x 28	56 x 71	6	15.2	9.25	23.5	6	15.2
HE-1500	22 x 28	56 x 71	6	15.2	9.25	23.5	6	15.2
HE-2000	22 x 28	56 x 71	6	15.2	9.25	23.5	6	15.2
HE-2500	22 x 28	56 x 71	8	20.3	9.25	23.5	6	15.2
HE-3000	22 x 28	56 x 71	8	20.3	9.25	23.5	6	15.2



HE-1500

HE hoppers are equipped with blower (HB) unit. (See separate HB data sheet).



All HE Hoppers include an extended borosilicate site glass for crystal clear viewing

Hopper Part Number*	Floor Stand 24" (61 cm) Clearance Part Number	Gaylord Stand 48" (122 cm) Clearance Part Number	Damper for Inlet/Outlet Part Number	*Vacuum Take-off Box Series	*Vacuum Purge Valve vacuum Purge Take-Off		*Drawer Magnets Part Number	Insulated Hose Sleeve Part Number	
					VPV Part Number	Adapter Part Number			
HE-60	FS-NPH-2	GS-NPH-21	DAM-2	VTB-4	VPV-15	No Adapter Required	DM-475	SLV-2	
HE-100					VPT-15				
HE-150					VPV-20				
HE-200	FS-NPH-3	GS-NPH-22			VPT-20		DM-600		
HE-300					VPV-25				
HE-400					VPT-25				
HE-600	FS-NPH-4	GS-NPH-23			VPV-30				
HE-800									
HE-1000									
HE-1200	FS-NPH-5	GS-NPH-24	DAM-3	VTB-8			DM-800	SLV-3	
HE-1500	FS-NPH-5	GS-NPH-24							
HE-2000	FS-NPH-6	GS-NPH-25							
HE-2500	FS-NPH-7	GS-NPH-26			ADP- VPV-800				
HE-3000	FS-NPH-8	GS-NPH-27							

### Options:

**Stainless steel interior:** Standard on HE -60 through HE -150. (Contact factory on other sizes).

Add MoistureMaster™ to any hopper for real-time resin moisture content in percent or ppm (parts per million).  
Request more information: [sales@novatec.com](mailto:sales@novatec.com)

### Accessories:

**Castors 5":** (4 each) on stands for up to HE-1000

**Capacitance bracket only:** For all hoppers

**Capacitance switch:** 24VDC or 115VAC

**Short run diffuser tube:** For HE-15 through -150

**Hopper extensions:**

For HE-60, -100 and -150

(12" dia., 25 lb additional capacity)

For HE-200, -300 & -400

(24" dia., 100 lb additional capacity)

For HE-600, -800 and -1000

(32" dia., 200 lb additional capacity)

**\*Vacuum take-off Box:** (See separate data sheet).

**\*Vacuum purge valve:** (See separate data sheet).

**\*Vacuum purge take-off:** (See separate data sheet).

**\*Drawer magnet:** (See separate data sheet).

**Air adapters (hopper to dryer):** (no charge)