



NW3-DC NovaWheel™ Dryers

NW3-DC and NW3-DC+ Dry/Convey Series

NW3-DC+ Series include a 7" color touch screen PLC control, High-Efficiency Hopper, & unique standard features that others call options!

This energy saving NovaWheel™ dryer design includes a 4" or 7" color touch screen PLC that is easier to use than any other dry/convey control. No confusing codes, function buttons or manual lookups. Plus, there are standard dryer features not found on competitive models.

NWB-DC+ models include these unique features:

7" Hi-Res Color Touch Screen PLC Control

Intuitive icons guide operator through set-up and monitors all drying parameters.

High Efficiency Hopper

Borosilicate Sight Glasses & High Efficiency Diffuser

OverDry Protection

Unique feature that eliminates over-drying of nylons and other sensitive resins.

Intuitive Control With Diagnostics Guide

A trouble shooting guide, complete with photos on the touch screen walk you through operational alarms as well as routine maintenance.

Ethernet Ready Plus SD Card

Smart Ethernet connection with data logging and trending.

Networking Capability

ColorNet™ networkable color HMI and VNC viewer compatible with many systems

Standard Features - All Models

Intelligent Regeneration

Monitors the regeneration process and makes changes, automatically, to minimize the energy used to no more than that required.

Standard Three-Phase Detection:

Detects phase error and provides alarm.

Auto-Start/Stop Timer

Set for any combination of hours per day and days per week.

Central Vacuum Blower for Conveying to Drying Hopper and Machine

Minimizes maintenance and energy usage.

Hopper and Dryer Uncouple

For use as separate units.

Automatic Monitoring and Alarm of Dryer Filter Condition

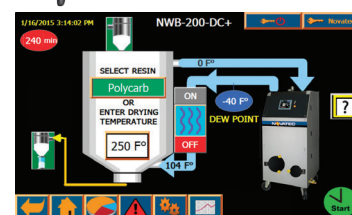
Operator is alerted with alarm light when process or regeneration filters need to be cleaned or replaced.

High Efficiency Stainless Steel Hopper

Fully insulated with full-length sight glass and pellet screen.



NW3-50-DC+
Includes hopper
and machine
mount receivers



7" Color Touch Screen

No-Charge Standards

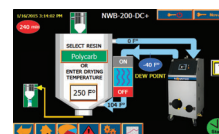
- Dew point analyzer with indication and alarm
- Red/green alarm light
- Aftercooler or Precooler cooling coil

5-Year Warranty

For lowest cost of ownership.

NWB-DC-25 through -200 models

Includes a 4" color touch screen PLC control and standard features shown, plus USB memory stick for data logging and trending.



4" Color Touch Screen

Plus

- › Separate process and regeneration blowers
- › Cooling coil with plasticizer drain for temperatures above 225°F
- › Hopper receiver and machine mount receiver
- › Vacuum purge valve with slide-gate discharge
- › 5" Casters for mobility
- › -40° Dew point guaranteed
- › Process temperatures up to 350°F (177°C) with interlock to heaters
- › Open Access to components
- › 1.5" Flex hose (50 ft) and clamps
- › 460/3/60 VAC standard
- › 5-Year warranty

DryerGenie Ready

Elevate to A.I.-powered, condition-based drying. Experience resin drying at ludicrous speed!

Specifications:

Model Number	Width*		Depth*		Height*		Air Connection		Hopper Capacity		Throughput Capacity			Connected Load			
											460/3/60	415/3/50	575/3/60	460/3/60	230/3/60	400/3/50	575/3/60
	in	cm	in	cm	in	cm	in	cm	lb	kg	lb/hr	kg/hr	lb/hr	amps	amps	amps	amps
NW3-25-DC+	46.4	118	31.6	80.3	72.5	184	2	5.1	60	27	25	9.3	25	12.0	34.5	10.9	8.6
NW3-50-DC+	46.4	118	31.6	80.3	75.4	192	2	5.1	110	50	50	18.6	50	15.7	36.3	14.4	11.6
NW3-100-DC+	57.9	147	34.3	87.1	82.0	208	4	10.2	220	100	100	37.3	100	21.9	43.7	19.8	16.6
NW3-150-DC+	57.9	147	34.3	87.1	96.0	244	4	10.2	330	150	150	55.9	150	25.0	50.0	22.5	19.1
NW3-200-DC+	68.7	174	34.3	87.1	96.3	245	4	10.2	600	273	200	74.5	200	30.7	na	27.9	23.8
NWB-300-DC+	73.4	186	51.6	131.1	106.3	270	4	10.2	800	364	300	111.8	300	49.8	na	45.9	37.9

* Specify + after model number for 7" color screen. Delete + for 4" color screen through -200.

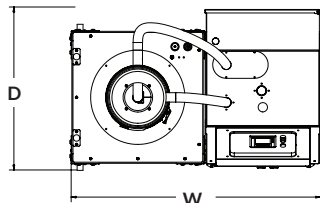
**Add 11" to "H" for VR-5 on NWB-25-DC+ & -50-DC+. *Add 14" to "H" for VR-12 on NWB-100-DC+ & -150-DC+.

***Add 20" to "H" for VR-12 on NWB-75,-200 & -300-DC+.

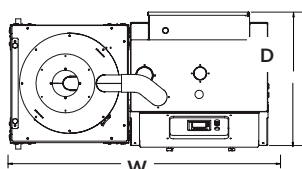
***Based on polycarbonate pellets @ 38 lb/ft³

†Casters or hopper extension are packed separately to avoid extra freight charges due to height.

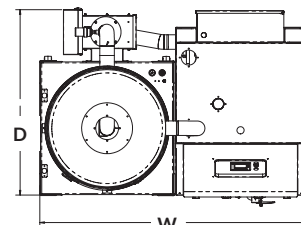
NOTE: Dimensions and throughput are the same for -DC and -DC+ models.



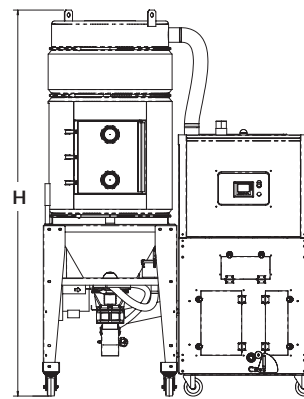
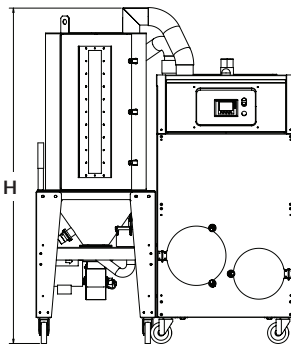
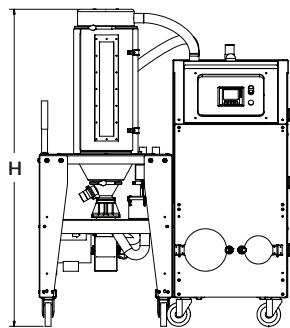
NW3-25-DC through
NW3-75-DC



NW3-100-DC through
NW3-200-DC



NWB-300-DC



Options:

Thermal+ For All Plus Models: Ensures that new heat-sensitive resins are dried properly. See separate data sheet.

Blowback: On machine mount receiver and hopper receiver

8 lb Glass Hopper: (In lieu of 2 lb when order ed with VR-12-MM only)

Alternate Voltages: (in lieu of 460V/3ph/60Hz)
415/3/50 (no charge) or 460/3/60-CUL, 575/3/60-CUL, 230/3/60

Water Saver: Reduces energy usage by ensuring that no more cooling takes place in an external cooling coil than is required (Plus models)

Accessories:

Stainless Steel Hopper Extensions for -DC and -DC+:

25 lb for -25 70 lb for -50 110 lb for -100
200 lb with or without sight glasses for -200 and -300

External Proportioning Valve with Coupler:

1.5" or 2.0" O.D.

External Process Air Cooling Coil on Stand or on Stand with Plasticizer Trap: (Applies to -300 models only) Drying temperatures less than 170°F (77°C) require an external process air cooling coil. Please contact factory for options.

Accessories Included @ No Charge		
Model	Machine Mount Receiver Capacity	Hopper Receiver Capacity
-25, -50	5 lb/2.3 Kg	5 lb/2.3 Kg
-75	5 lb/2.3 Kg	12 lb/5.5 Kg
-100, -150, -200, -300	12 lb/5.5 Kg	12 lb/5.5 Kg
Flex Hose, Clamps and Pickup Wand Included		