



FlexTouch™ FTB Central Conveying Controls



FlexTouch™ FTB-106-2-7C



The FlexTouch™ FTB Series provides full-featured touchscreen control and demand-based loading in a compact, economical package.

The FlexTouch™ FTB is a touchscreen-based central loading control built on a Novatec PLC platform — purpose-engineered for fast, reliable response in demanding production environments. All receivers, pumps, and purge valves connect to a single compact enclosure via discrete wiring.

7" Color Touchscreen Control

Intuitive operation via a high-resolution 7" color comfort panel. Vivid icons and clear station status require no special operator training.

Novatec PLC Architecture

Built on a Novatec PLC platform engineered for fast, consistent response. Industrial-grade reliability designed for 24/7 production environments.

BOP Standard on All Models

Blowback or proportioning (BOP) outputs are included as standard on every FTB model — no add-on card required.

Demand-Based FIFO Loading

Stations are loaded in the order they request material — First In, First Out — ensuring every machine gets material when it needs it without unnecessary waits.

Pump Source Sharing

A single material source can be shared across both pumps in a two-pump configuration. The control manages interlocking automatically — no dedicated source-per-pump assignment required.

Ethernet Connectivity

Built-in Ethernet capability allows the FTB to be networked to PCs or HMIs anywhere on the plant floor for remote monitoring and control.

Not sure this is the right control for your operation? The FTB is one of three central controls in the Novatec FlexTouch lineup. If your operation requires more stations, pumps, or advanced integration capabilities, a larger platform may be the better fit.

Control	Max Stations	Max Pumps	Best For
FTB ← You are here	12	2	Small operations with straightforward material routing
FTS	34	3	Growing mid-sized plants needing multi-pump control and touchscreen automation
FX3	224	40	Large-scale facilities requiring plant-wide integration, advanced analytics, and full automation

Plus

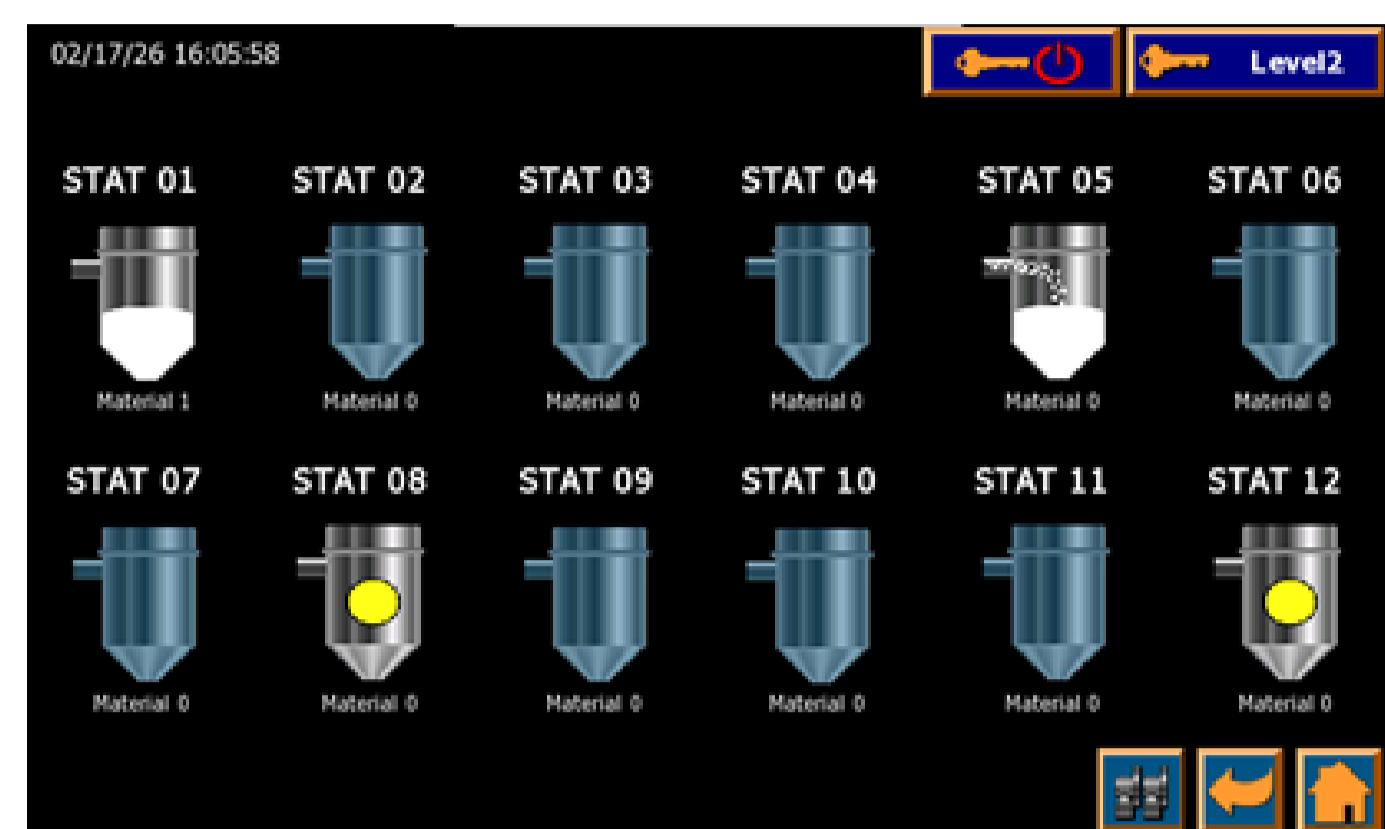
- > 24 VDC inputs & outputs standard
- > Audible and visual alarms on the control face
- > 115/1/50-60 Volt standard (230 VAC optional)
- > 5-Year warranty

Baltimore, MD 21225 USA 410-789-4811 | Fax: 410-789-4638 | sales@novatec.com | www.novatec.com

The FlexTouch FTB Touchscreen

Provides an intuitive display of all conveying functions through vivid, icon-driven graphics, personalized descriptive text, and effective alarm messages. Changes to operating parameters can be made easily with assignable levels of security and instant feedback.

Access the full system remotely from any networked PC or HMI. Multiple security levels and selectable passwords prevent unauthorized changes.



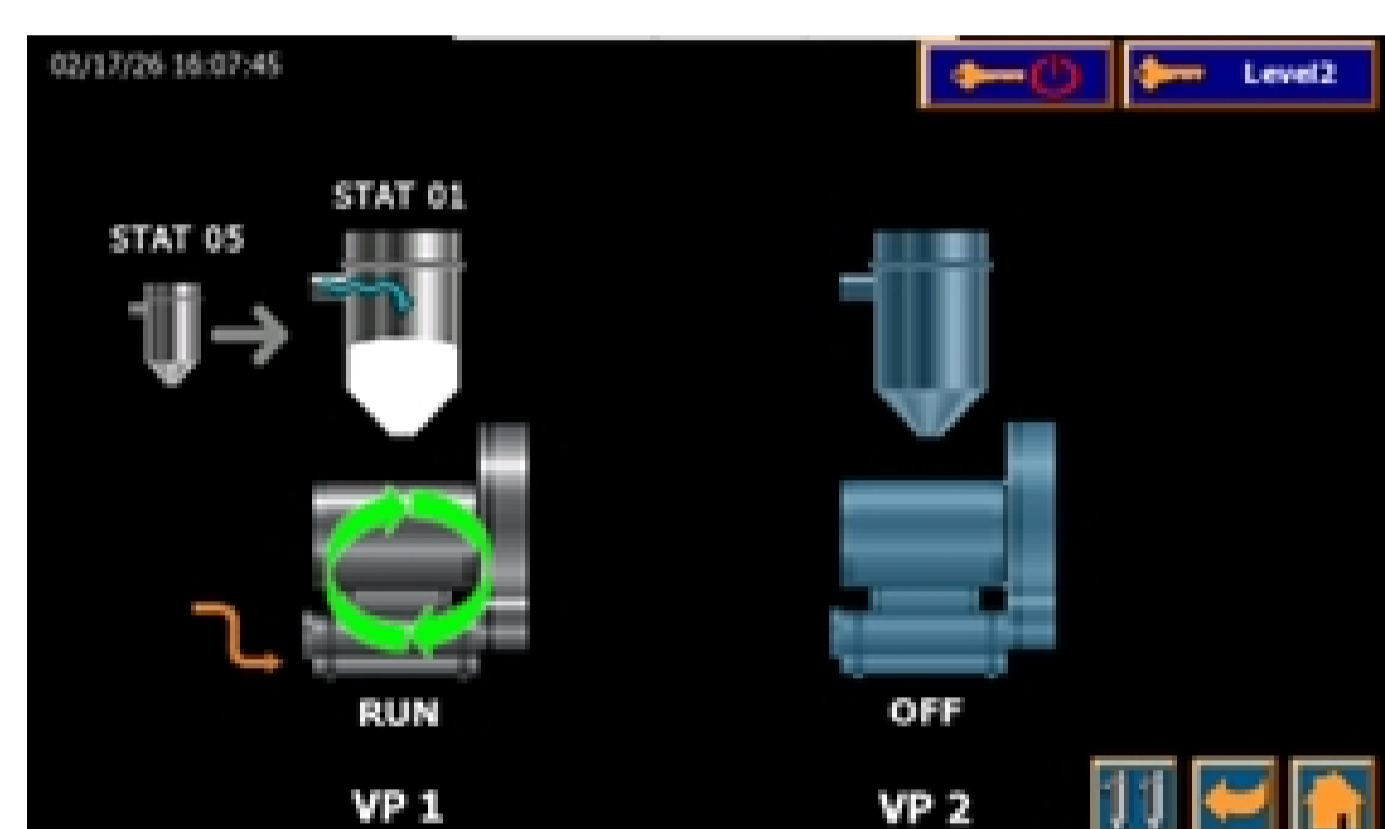
Station Status



Station Setup



Pump Setup



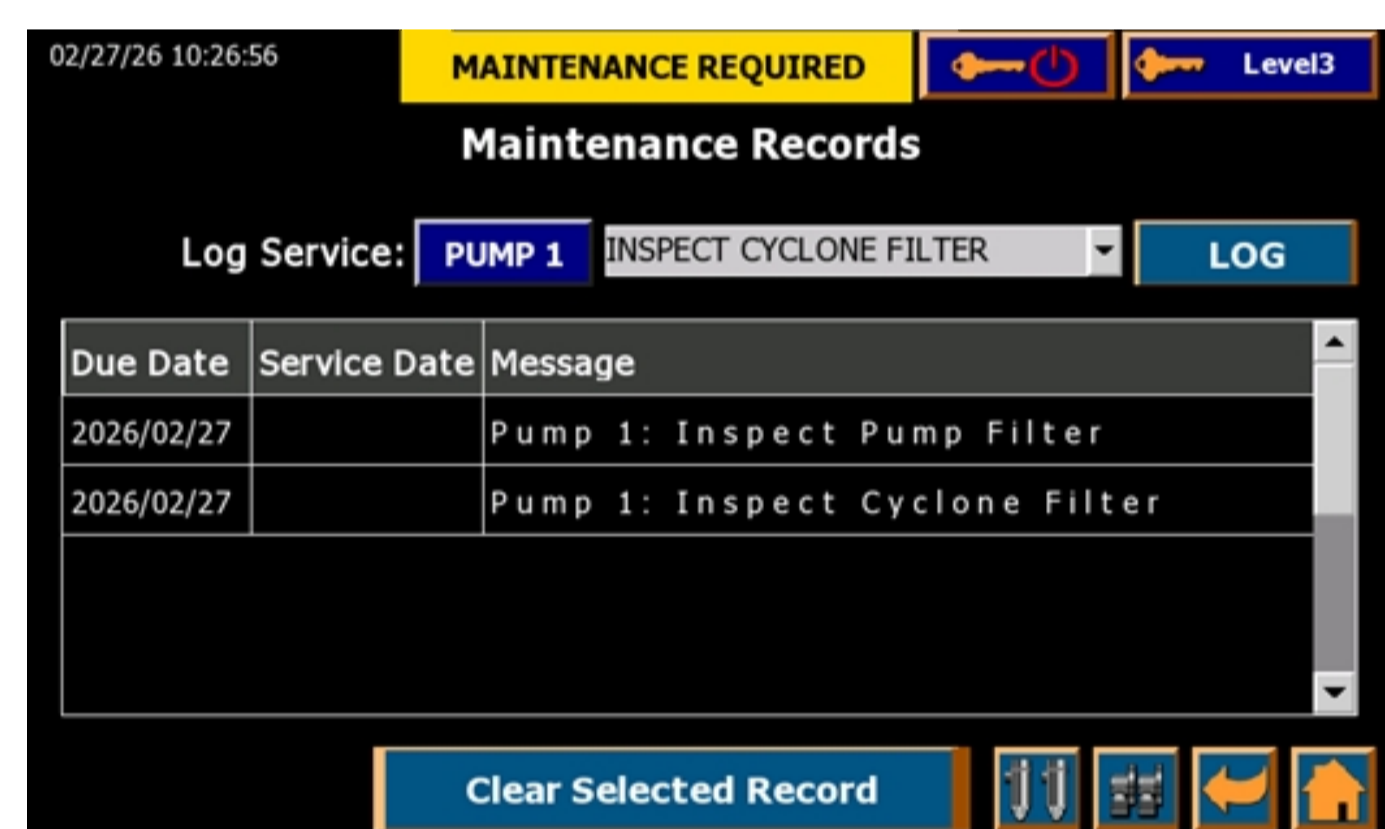
Pump Setup



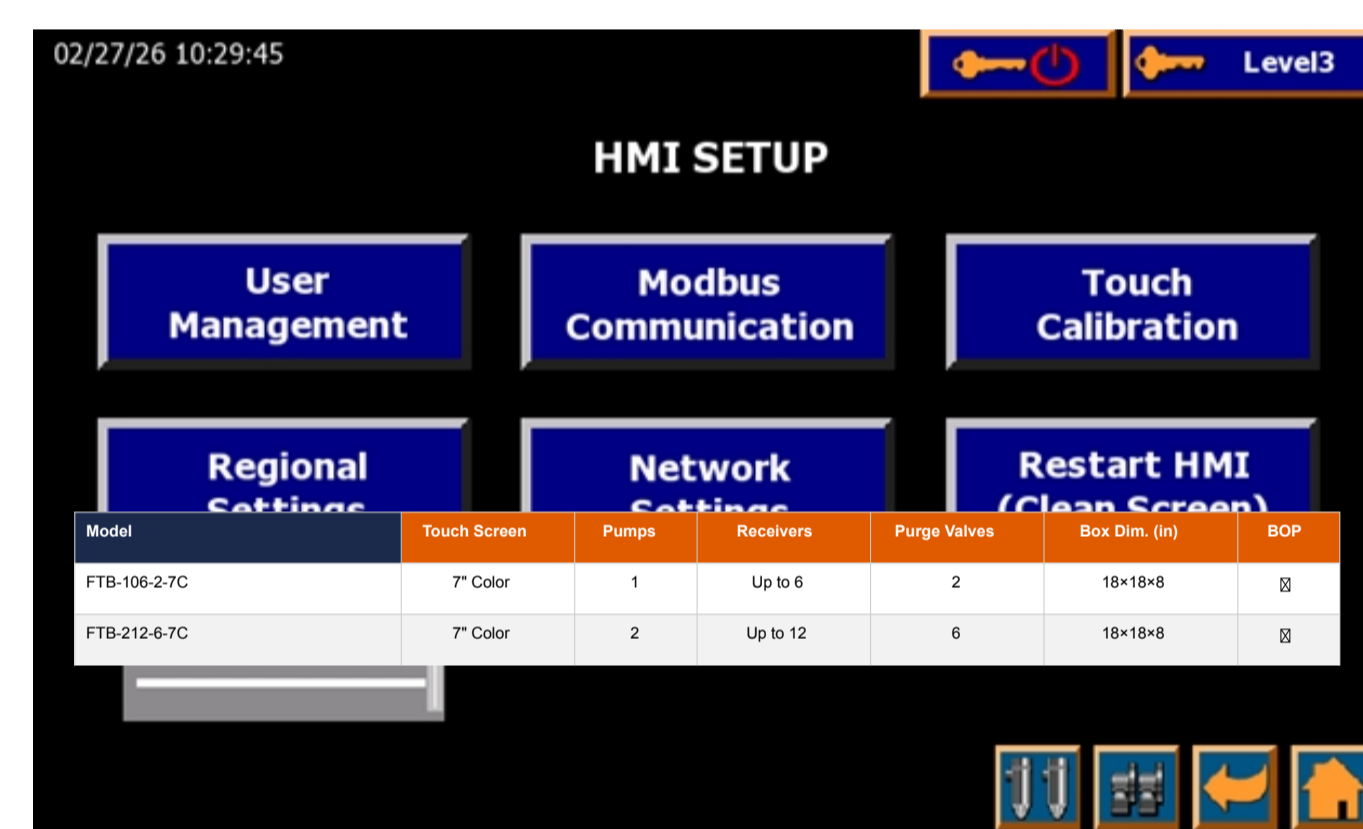
System Setup



Alarm Log



Maintenance Records



HMI Setup



Regional & Language Settings

Specifications:

Model	Touch Screen	Pumps	Receivers	Purge Valves	Box Dim. (in)	*BOP
FTB-106-2-7C	7" Color	1	Up to 6	2	18×18×8	✓
FTB-212-6-7C	7" Color	2	Up to 12	6	18×18×8	✓

*BOP = Blowback OR Proportioning. Included standard on all models.

Model	Description	Dim. W×H×D (in)	Dim. W×H×D (mm)	Amps 115V	Amps 230V	I/O Voltage
FTB-106-2-7C	1-pump control panel	18×18×8	457×457×203	1.5	1	24 VDC
FTB-106-2-7C-120	1-pump / 115V I/O	18×18×8	457×457×203	1.5	1	115 VAC
FTB-212-6-7C	2-pump control panel	18×18×8	457×457×203	1.5	1	24 VDC
FTB-212-6-7C-120	2-pump / 115V I/O	18×18×8	457×457×203	1.5	1	115 VAC

Baltimore, MD 21225 USA 410-789-4811 | Fax: 410-789-4638 | sales@novatec.com | www.novatec.com

Model Selection Guide

Use this quick reference to identify the right FTB configuration for your operation:

If your operation looks like this...	Choose this model
Single pump, up to 6 receivers, standard material routing	FTB-106-2-7C
Single pump, up to 6 receivers, facility has existing 115V I/O	FTB-106-2-7C-120
Two pumps, up to 12 receivers, shared or multiple material sources	FTB-212-6-7C
Two pumps, up to 12 receivers, facility has existing 115V I/O	FTB-212-6-7C-120
Any FTB model in a 230V 50/60Hz single-phase facility	Add option: VOLT-FTB-21
Any FTB model requiring an external visual alarm indicator	Add option: kit-strobe-24

Options:

115V I/O for existing systems: (Must be factory installed) Available for FTB-106-2-7C (part # FTB-106-2-7C-120) and FTB-212-6-7C (part # FTB-212-6-7C-120).

230V Panel Input Power: In lieu of 115 VAC standard. Part #: VOLT-FTB-21.

Alarm strobe: (24 VDC) Part #: kit-strobe-24.